



SCHROEDER RANCH



12th Annual Gelbvieh & Balancer Production Sale

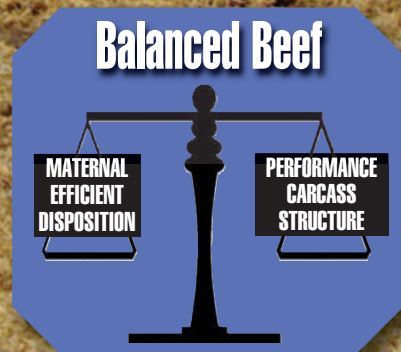


Saturday, April 3, 2010

2 pm CDT

Mitchell Livestock Auction • Mitchell, SD

SELLING: 55 Bulls



"Common Sense Cattle"



**SCHROEDER
RANCH**

Steve Schroeder
605-366-5693

Dustin Tolsma, herdsman
605-539-0235

www.schroedercattle.com

Sale managed by:

Mettler Sale Management

Jerry Mettler David Mettler



28884 480th Avenue
Canton, South Dakota 57013
(605) 987-2114
www.mettlersales.com

Performance Tested and "measured" so you can "manage the information"

SCHROEDER BULLS

"BALANCED BEEF"

*We measure it -- so
you can manage it!!*

- **Schroeder Ranch explanation of the important measurement traits found in the Sale Catalog:**

EPD CHART

EPDs Expected Progeny Differences

(PB breed average):	For active sires:	(B = Balancer)
CE	Calving Ease (105)	(B = 104)
BW	Birth Weight (1.3)	(B = -0.1)
WW	Weaning Weight (41)	(B = 35)
YW	Yearling Weight (75)	(B = 74)
MK	Milk (17)	(B = 17)
TM	Total Maternal (38)	(B = 35)
GL	Gestation Length (-1.5)	(B = -1.1)
CED	Daughter's Calving Ease (104)	(B = 102)
SC	Scrotal Circumference (0.4)	(B = 0.3)
ST	Stayability (cow's ability to produce a calf after age 6) (5)	(B = 4)
CW	Carcass Weight (8)	(B = 7)
REA	Ribeye Area (.09)	(B = .08)
MB	Marbling (-0.05)	(B = .02)
DfT	Days to Finish (3.8)	(B = 3.2)
CV	Carcass Value (3.68)	(B = 10.13)
FM	Feedlot Merit (extra dollars based on pounds gained from Weaning Weight to Yearling Weight (7.78))	(B = 13.89)

CONTACT SALE MANAGERS if you need assistance with making purchases!

SALE MANAGER:

Find catalog and sale results online at



Welcome Beef Producers to our 12th Annual Gelbvieh & Balancer Production Sale

This year we are offering 54 red and black Gelbvieh and Balancer bulls. All bulls are performance tested for 147 days, ultra sounded for carcass data, and semen tested. The black bulls have been DNA tested for homo black and are so marked. Scrotal information will be available on the website and sale day.

As you look through the catalogue you will notice we don't have any pictures of the bulls. We just didn't have the right weather conditions to get good pictures. We will post photos on our website www.schroedercattle.com as weather permits.

A sin any operation there are a lot of people that contribute to making it a success. From our herdsman Dustin Tolsma and farm manager Dennis Tolsma, to my wife (Denise) and sons (Kris and Jason) that help whenever possible, to neighbors and friends that are always there to lend a hand, I would like to say thank you.

If you need further information or have any questions about this year's offering, please contact Dustin or myself and we will be happy to visit with you about the bulls. I look forward to seeing you April 3rd in Mitchell. Come early and enjoy lunch and evaluate the bulls.

Sincerely,
Steve Schroeder

• **MANAGER'S NOTE:** I had the good fortune to evaluate the bulls about a month prior to the sale and I must say that once again Steve and his "crew" have mastered the science of genetic selection. The bulls offered in this sale can strongly compete with any bull offering anywhere and from any breed! It really would be worth your time to be in Mitchell on April 3rd!

INSURANCE: Available at settlement desk.

SALE LOCATION: Take the Mitchell Exit #332 off I-90 and go south. Take the 1st left and follow the road east to Mitchell Livestock (straight East of Cabela's).

HEALTH: Bulls are fertility tested, scrotal measured, poured and vaccinated!

ULTRASOUND DATA: All bulls will be ultrasounded.

DNA TESTING: All double black bulls have been DNA tested for coat color. Homozygous black bulls will be identified.

FREE CARE of your purchase(s) until delivery -- we would like to continue to "develop" the bulls for you! Leave your trailer at home -- we'll have them "ready" for turn out for you.

RING SERVICE:

Jeff Kapperman, *Tri-State Neighbor*
Val Luckett, *Mitchell Livestock*
Tim Moody, *Mitchell Livestock*

AUCTIONEER: Lanning Edwards
605/999-1250

MOTEL: Super 8 Motel • 605/996-9678
Kelly Inn • 605/995-0500

SALE DAY PHONES:

Mitchell Livestock • 605/996-6543
Schroeder Cell • 605/366-5693
Mettler Cell • 605/366-4192; 605/321-9848

1 W300

Multi-Polled Black
2/10/09 50% AN, 25% GV, 25% AR

SITZ TRAVELER 8180 (G D A R TRAVELER 71)
S A V FINAL ANSWER 0035
S A V EMULOUS 8145 (BON VIEW BANDO 598)

OHRH OHRH DAKOTA COPPER 29K (JHL LCHMAN COPPER ROB 1204D)
SGRI T707
SGRI LAVINA R510 (BTI EXTRA 2106K ET)

CE	BW	WW	YW	Milk	TM	GL	CED
-4.5	35	79	17	35	-1.3		
SC	CW	REA	MB	DtF	CV	FM	
0	.01	.02	1.9	0.17	22.05		
BW	Adj WW	Adj YW	SC				
77	680	1274					
ADG	FS	REA	BF	% IMF			
3.74	5.4	13.9	.37	3.32			

Moderate framed bull that should work great on heifers! Great easy fleshing bull.

2 W301

Multi-Polled Black
2/15/09 50% AN, 25% GV, 25% AR

SITZ TRAVELER 8180 (G D A R TRAVELER 71)
S A V FINAL ANSWER 0035
S A V EMULOUS 8145 (BON VIEW BANDO 598)

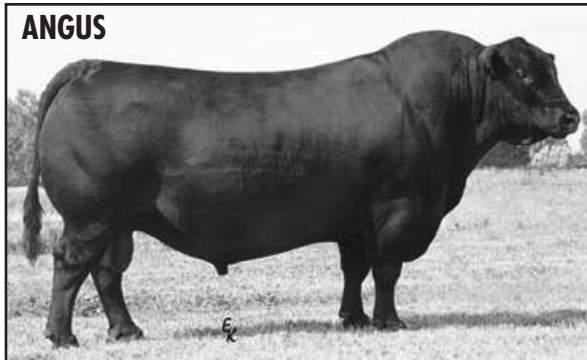
OHRH OHRH DAKOTA COPPER 29K (JHL LCHMAN COPPER ROB 1204D)
SGRI T702
SGRI TERACE R578 (JCGR BAR GT LOUIE 2J)

CE	BW	WW	YW	Milk	TM	GL	CED
-4.0	39	84	20	40	-1.3		
SC	CW	REA	MB	DtF	CV	FM	
0	.01	.02	1.9	.29	24.54		
BW	Adj WW	Adj YW	SC				
80	700	1305					
ADG	FS	REA	BF	% IMF			
3.81	6.3	14.1	.34	4.76			

Fantastic cow family here! Right combination of calving ease and growth and carcass = Balance! Deep sided with excellent muscle pattern. Dam is a first calf heifer. NICE IMF!!

FINAL ANSWER

ANGUS



Sire of Lots: 1, 2, 4, 11

CE	BW	WW	YW	Milk	TM	GL	CED
108	-5.7	41	95	21	42	-1.5	105
SC	CW	REA	MB	DtF	CV	FM	
EPDs	.2	5	.05	.06	3.3	12.49	53.06

3 W302

Multi-Polled Black
2/19/09 50% GV, 50% AN

S A F FOCUS OF E R (S A F FAME)
MYTTY IN FOCUS
MYTTY COUNTESS 906 (SITZ ALLIANCE 6595)

JCGR BAR GT LOUIE 2J (GKT BUD 11G)
SGRI T728
SGRI HAWN L152 (KLBK KING OF THE HILL 16H)

CE	BW	WW	YW	Milk	TM	GL	CED
100	1.6	45	90	18	41	-2.0	101
SC	CW	REA	MB	DtF	CV	FM	
0.2	14	.2	.01	-0.6	19.56	26.05	
BW	Adj WW	Adj YW	SC				
104	685	1324					
ADG	FS	REA	BF	% IMF			
4.05	5.8	14.4	.33	3.72			

Powerhouse of a bull. Plenty of width and depth in an attractive easy keeping package out of a first calf heifer. Moderate frame size — excellent ADG.

4 W303

Multi-Polled Black
2/20/09 50% GV, 50% AN

SITZ TRAVELER 8180 (G D A R TRAVELER 71)
S A V FINAL ANSWER 0035
S A V EMULOUS 8145 (BON VIEW BANDO 598)

JCGR BAR GT LOUIE 2J (GKT BUD 11G)
SGRI T722
SGRI KELLY H914 (MTG MR T 22C)

CE	BW	WW	YW	Milk	TM	GL	CED
-2.3	42	78	20	41	-1.5		
SC	CW	REA	MB	DtF	CV	FM	
0.3	9	.12	.04	1.5	14.66	12.08	
BW	Adj WW	Adj YW	SC				
88	757	1324					
ADG	FS	REA	BF	% IMF			
3.61	6.5	13.8	.42	2.71			

These Final Answer's are good! Great calving ease, with growth. Isn't that what we all want? Once again done by a first calf heifer sired by Louie.

MYTTY IN FOCUS

ANGUS



Sire of Lots: 3, 10, 12, 13

CE	BW	WW	YW	Milk	TM	GL	CED
107	-4.8	37	91	23	42	-2.0	102
SC	CW	REA	MB	DtF	CV	FM	
EPDs	.1	15	.20	0	-.9	20.80	51.99

5 W304

Multi-Polled 2/20/09 Homo Black
50% GV, 50% AN

GARDENS PRIME TIME (R R TRAVELER 5204)

N BAR PRIME TIME D806

N BAR MISS EMULOUS A404 (N BAR EMULATION EXT Z52)

XXB BIG N' RICH 911P ET (XXB TITUS 880K)

SGRI T720

SGRI AMELIA L179 (LWHF ABSOLUTE BLACK 352H)

CE	BW	WW	YW	Milk	TM	GL	CED
103	-1.0	34	80	17	34	-1.8	103
SC	CW	REA	MB	DtF	CV	FM	
0.3	-6	-.11	.19	6.5	3.06	24.77	
BW	Adj WW	Adj YW	SC				
80	685	1342					
ADG	FS	REA	BF	% IMF			
4.16	6.1	13.9	.28	3.22			

Well made son of N Bar Prime Time. Twin to a heifer! 4# plus gainer! Exceptional work done by a first calf heifer sired by the past Reserve National Champion bull — Big N' Rich!

6 W305

Multi-Polled 2/22/09 Black
50% AN, 25% GV, 25% AR

B/R NEW DESIGN 036 (V D A R NEW TREND 315)

BON VIEW NEW DESIGN 1407

BON VIEW PRIDE 664 (G A R SLEEP EASY 1009)

OHRR OHRR DAKOTA COPPER 29K (JHL LCHMAN COPPER ROB 1204D)

SGRI T703

SGRI GERMANIA R561 (KLBF KING OF THE HILL 16H)

CE	BW	WW	YW	Milk	TM	GL	CED
-2.4	40	94	24	44	-1.8		
SC	CW	REA	MB	DtF	CV	FM	
7	-.01	.2	3.1	26.43	38.38		
BW	Adj WW	Adj YW	SC				
84	736	1454					
ADG	FS	REA	BF	% IMF			
4.52	6.4	15.2	.34	5.73			

I really like this bull! He does most everything right! From birth to weaning to yearling to carcass! Oh and we could scratch him since he was a calf! That's my kind of disposition! Number's speak for themselves! Here's a MUST FIND bull — could be one of the elite Balancer bulls to be offered all spring. W305 is absolutely problem free!! HERD BULL!

7 W308

Multi-Polled 2/23/09 Red
50% GV, 50% AR

RED COMPASS MULBERRY 449M (RED HR RAMBO ET 91K)

NVG RED FINE LINE MULBERRY 26P

RED DUS FAYETTE 8G (RED SILVEIRAS REDFORD)

JCGR BAR GT LOUIE 2J (GKT BUD 11G)

SGRI HOPE N313

SGRI HOPE L155 (KLBF KING OF THE HILL 16H)

CE	BW	WW	YW	Milk	TM	GL	CED
1.6	48	98	14	38	-1.1		
SC	CW	REA	MB	DtF	CV	FM	
						34.35	
BW	Adj WW	Adj YW	SC				
104	740	1543					
ADG	FS	REA	BF	% IMF			
5.07	6.8	13.8	.31	3.45			

Here's an "OH, MY GOSH" bull — you are nearly breathless when you first set eyes on him — GOOD BULL!! The undisputed king of growth! 5# plus gainer! He wasn't fed to do that! He is long as a train, wide and thick! Due to some really unfortunate weather we just couldn't get pictures of these soggy bulls in the catalog. I urge you to come take a look for yourself. I don't think you will be disappointed! His sire, Mulberry, is probably the 'hottest' sire in the Red Angus breed.

N BAR PRIME TIME



Sire of Lot: 5

CE	BW	WW	YW	Milk	TM	GL	CED
109	-6.3	12	60	20	26	-2.6	106
SC	CW	REA	MB	DtF	CV	FM	
EPDs	-.2	-.21	-.26	.47	7.8	-5.47	36.14

BON VIEW NEW DESIGN 1407



Sire of Lots: 6, 8

CE	BW	WW	YW	Milk	TM	GL	CED
107	-4.3	35	94	33	51	-2.2	104
SC	CW	REA	MB	DtF	CV	FM	
EPDs	.4	20	.01	.41	5.8	61.21	59.37

NVG RED FINE LINE MULBERRY 26P



Sire of Lots: 7, 18, 20, 39

CE	BW	WW	YW	Milk	TM	GL	CED
	-1.1	40	87	14	34		
SC	CW	REA	MB	DtF	CV	FM	
EPDs						57.03	

8 W309

Multi-Polled Black
2/23/09 50% GV, 50% AR

B/R NEW DESIGN 036 (V D A R NEW TREND 315)
BON VIEW NEW DESIGN 1407
BON VIEW PRIDE 664 (G A R SLEEP EASY 1009)

XXB BIG N' RICH 911P ET (XXB TITUS 880K)
SGRI T764
SGRI PAM P457 (KLBF KING OF THE HILL 16H)

CE	BW	WW	YW	Milk	TM	GL	CED
103	-3.0	37	86	23	42	-1.3	105
SC	CW	REA	MB	DtF	CV	FM	
0.5	14	.02	.17	5.5	32.79	30.02	
BW	Adj WW	Adj YW	SC				
72	676	1289					
ADG	FS	REA	BF	% IMF			
3.89	5.6	14.1	.44	5.96			

Wow! 72# birthweight to go with a near 1300# yearling weight! Highest scanning marbling bull in the sale at 5.96! Take note that many of these good performing attractive bulls all descend from Hank dams or granddams.

9 W310

Multi-Polled Black
2/25/09 50% AR, 25% GV, 25% AN

RAB BIEBER MAKE MIMI 7249 (BJR BJR MAKE MY DAY 981)
CTDB C-T BUFFALO HORN 0712
CTDB C-T VERDI 0502 (CPH GLACIER CHATEAU 744)

G 13 STRUCTURE (TC STOCKMAN 365)
SGRI T708
SGRI HENRIETTA R508 (BTI EXTRA 2106K ET)

CE	BW	WW	YW	Milk	TM	GL	CED
	-3.1	30	69	18	33	-1.0	
SC	CW	REA	MB	DtF	CV	FM	
						13.48	
BW	Adj WW	Adj YW	SC				
78	667	1226					
ADG	FS	REA	BF	% IMF			
3.52	6.0	13.6	.31	3.30			

Twin to a bull calf. These are the first Buffalo Horn calves. We think he worked well with our cowherd. You be the judge. Remember nearly all these early born bulls are out of first calf heifers.

10 W313

Multi-Polled Homo Black
2/25/09 50% GV, 50% AR

S A F FOCUS OF E R (S A F FAME)
MYTTY IN FOCUS
MYTTY COUNTESS 906 (SITZ ALLIANCE 6595)

XXB BIG N' RICH 911P ET (XXB TITUS 880K)
SGRI T733
SGRI KENYA N325 (LWHF ABSOLUTE BLACK 352H)

CE	BW	WW	YW	Milk	TM	GL	CED
106	-1.9	45	87	18	41	-1.8	104
SC	CW	REA	MB	DtF	CV	FM	
.4	12	.12	-.04	2.1	12.25	21.60	
BW	Adj WW	Adj YW	SC				
83	748	1313					
ADG	FS	REA	BF	% IMF			
3.59	5.8	13.1	.33	3.68			

Moderate framed with balanced numbers across the board. He walks around with a big set of testicles! Scrotal measurements available on sale day supplement sheet. Here is another pretty darn good low birthweight bull.

11 W315

Multi-Polled Black
3/1/09 50% GV, 50% AN

SITZ TRAVELER 8180 (G D A R TRAVELER 71)
S A V FINAL ANSWER 0035
S A V EMULOUS 8145 (BON VIEW BANDO 598)

JRI PLD FREE AGENT 125J3 (SLC FREEDOM 178F ET)
SGRI T713
SGRI SPLENDOR R532 (SPUR BERETTA 703G)

CE	BW	WW	YW	Milk	TM	GL	CED
	-3.2	43	91	20	42	-2.5	
SC	CW	REA	MB	DtF	CV	FM	
.4	1	-.06	-.04	3.8	-3.05	30.04	
BW	Adj WW	Adj YW	SC				
83	693	1308					
ADG	FS	REA	BF	% IMF			
3.9	6.3	12.1	.46	5.24			

Great cow family behind this well made bull! One of the high scanning bulls for marbling! Long spined, clean sheathed, neatly patterned calf! Check his ADG and IMF!

12 W316

Multi-Polled Black
3/1/09 50% GV, 50% AN

S A F FOCUS OF E R (S A F FAME)
MYTTY IN FOCUS
MYTTY COUNTESS 906 (SITZ ALLIANCE 6595)

BEA BLACK PERFECTION (VRT LAZY TV COCOA J265)
SGRI T763
SGRI ARIEL N321 (LWHF ABSOLUTE BLACK 352H)

CE	BW	WW	YW	Milk	TM	GL	CED
102	-.7	39	80	18	38	-1.2	
SC	CW	REA	MB	DtF	CV	FM	
0.3	9	.11	0	1	11.77	18.63	
BW	Adj WW	Adj YW	SC				
90	651	1216					
ADG	FS	REA	BF	% IMF			
3.59	6.2	11.9	.25	2.46			

In Focus calf that is very complete. These In Focus calves should work well on bigger framed heifers. Study his rear quarter muscle pattern — pretty nice isn't it?

13 W317

Multi-Polled Black
3/1/09 50% GV, 50% AN

S A F FOCUS OF E R (S A F FAME)
MYTTY IN FOCUS
MYTTY COUNTESS 906 (SITZ ALLIANCE 6595)

BEA BLACK PERFECTION (VRT LAZY TV COCOA J265)
SGRI T776
SGRI CHELSEA P468 (LWHF ABSOLUTE BLACK 352H)

CE	BW	WW	YW	Milk	TM	GL	CED
103	-1.5	42	84	19	40	-1.1	103
SC	CW	REA	MB	DtF	CV	FM	
0.3	9	.11	0	1	11.89	20.85	
BW	Adj WW	Adj YW	SC				
83	695	1247					
ADG	FS	REA	BF	% IMF			
3.51	6.4	14.6	.29	4.39			

In Focus calf that hits all the marks! We like our Black Perfection daughters. Docile, great mothering ability! Low birthweight and yet sports a big 1.25/cwt. ratio for REA.

14 W322

Multi-Polled Red
3/6/09 50% GV, 50% AR

RED HEARTLAND KNIGHT CHARM 11L (RED YY RED KNIGHT 640F)
HFX RD TER-RON FULLY LOADED 540R
RED TER-RON GOLDIE 240L (RED LAZY MC DIVIDE 8J)

VRT LAZY TV AMADEUS K298 (SLC FREEDOM 178F ET)
SGRI BROOKE M260
SGRI BROOKE H842 (GFA BERGEN EXCALIPER 529E)

CE	BW	WW	YW	Milk	TM	GL	CED
1.4	36	70	12	30	-9		
SC	CW	REA	MB	DiF	CV	FM	
							7.74
BW	Adj WW	Adj YW	SC				
108	681	1270					
ADG	FS	REA	BF	% IMF			
3.74	5.6	14.6	.22	3.43			

Moderate framed powerhouse! Fully Loaded is a bull from Canada we wanted to get semen on to transmit more beef than most sires here in the states. Great length, with an attractive profile. Here is another large testicle bull that could be an asset to any program.

HFX RD TER-RON FULLY LOADED 540R



Sire of Lots: 14, 32, 35, 38

CE	BW	WW	YW	Milk	TM	GL	CED
1.0	34	71	7	24			
SC	CW	REA	MB	DiF	CV	FM	
							39.82
EPDs							

15 W323

Multi-Polled Red
3/9/09 50% GV, 50% AR

RAB BIEBER MAKE MIMI 7249 (BJR BJR MAKE MY DAY 981)
CTDB C-T BUFFALO HORN 0712
CTDB C-T VERDI 0502 (CPH GLACIER CHATEAU 744)

SGRI P156 (SPUR BERETTA 703G)
SGRI T746
SGRI PAIGE J931 (PTC PACIFIC DOUBLE 731B)

CE	BW	WW	YW	Milk	TM	GL	CED
-2.4	37	70	19	38	-1.3		
SC	CW	REA	MB	DiF	CV	FM	
							6.55
BW	Adj WW	Adj YW	SC				
84	701	1238					
ADG	FS	REA	BF	% IMF			
3.41	6.4	14.5	.26	3.77			

Another good solid bull. No holes. We purchased Buffalo Horn from Feddes/C-T Red Angus in Montana sight unseen. His dam and granddam have picture perfect udders. His pedigree is nothing short of maternal excellence.

16 W325

Polled/S Black
3/11/09 50% GV, 50% AN

TWIN VALLEY PRECISION E161 (G A R PRECISION 1680)
BR MIDLAND
BR ROYAL LASS 7036-19 (S A F NEUTRON)

WAC ELK NIGHT RYDER 522E ET (KCF BENNETT ANCHOR B227)
SGRI N4 ET
CDG 054Z (NKP 152T)

CE	BW	WW	YW	Milk	TM	GL	CED
102	0	40	78	17	37	-2.7	100
SC	CW	REA	MB	DiF	CV	FM	
.2	8	.03	.08	7.5	16.60	14.49	
BW	Adj WW	Adj YW	SC				
90	727	1308					
ADG	FS	REA	BF	% IMF			
3.69	6.2	13.9	.30	4.08			

W325 hails from another no miss cow family. His dam is a portrait of the kind of female we like! Great balance in this bulls numbers across the board. Dandy 4.08% IMF!

17 W327

Multi-Polled Black
3/13/09 50% GV, 50% AR

RAB BIEBER MAKE MIMI 7249 (BJR BJR MAKE MY DAY 981)
CTDB C-T BUFFALO HORN 0712
CTDB C-T VERDI 0502 (CPH GLACIER CHATEAU 744)

XXB BIG N' RICH 911P ET (XXB TITUS 880K)
SGRI T748
SGRI GALE N315 (JCGR BAR GT LOUIE 2J)

CE	BW	WW	YW	Milk	TM	GL	CED
-1.9	40	81	19	39	-6		
SC	CW	REA	MB	DiF	CV	FM	
							18.88
BW	Adj WW	Adj YW	SC				
84	718	1272					
ADG	FS	REA	BF	% IMF			
3.52	7.4	12.1	.29	4.49			

This bulls dam is a full sister to Lot #23! Bigger framed bull. One of the better scanning marbling bulls. Big N' Rich/Louie influence dam — along with the Hank daughters, this has been our breeding program.

BR MIDLAND



Sire of Lot: 16

CE	BW	WW	YW	Milk	TM	GL	CED
109	-1.1	34	84	9	26	-3.7	106
SC	CW	REA	MB	DiF	CV	FM	
							44.95
EPDs	0	6	.05	.18	17.1	24.31	44.95

18 W330

Multi-Polled Red
3/15/09 50% GV, 50% AR

RED COMPASS MULBERRY 449M (RED HR RAMBO ET 91K)
NVG RED FINE LINE MULBERRY 26P
RED DUS FAYETTE 8G (RED SILVEIRAS REDFORD)

JDPD ROLEX 151M (HAD SLEEP TIGHT ET)

SGRI S663

SGRI KAITEN K007 (JHL LCHMN BETTER DEAL 2024D)

CE	BW	WW	YW	Milk	TM	GL	CED
-1.1	38	76	14	33	-1.9		
SC	CW	REA	MB	DtF	CV	FM	
							14.00
BW	Adj WW	Adj YW	SC				
86	655	1216					
ADG	FS	REA	BF	% IMF			
3.56	5.8	11.9	.30	4.14			

Very attractive Mulberry bull. Mulberry was the 2-time Canadian Show bull of the year. He has been one of the most used Red Angus bulls the past couple of years. Moderate framed great marbling.

20 W338

Double Polled Red
3/19/09 50% GV, 50% AR

RED COMPASS MULBERRY 449M (RED HR RAMBO ET 91K)
NVG RED FINE LINE MULBERRY 26P
RED DUS FAYETTE 8G (RED SILVEIRAS REDFORD)

KLBF KING OF THE HILL 16H (ELK FREIGHTTRAIN 836D)

SGRI HANNAH L151

AFT 542B (LEN 184Y)

CE	BW	WW	YW	Milk	TM	GL	CED
.2	0.2	40	75	15	35	-9	
SC	CW	REA	MB	DtF	CV	FM	
							10.15
BW	Adj WW	Adj YW	SC				
94	659	1179					
ADG	FS	REA	BF	% IMF			
3.31	5.8	13.6	.17	3.11			

Out of a Hank sired dam and the very popular Mulberry Red Angus bull. Exceptional balance on a moderate frame.

22 W344

Multi-Polled Red
3/21/09 Purebred

XXB TITUS 880K (MRCO NEW DIRECTION 905)
XXB BIG N' RICH 911P ET
EGL G565 (EVE MR BEAU JANGLES 308B)

KLBF KING OF THE HILL 16H (ELK FREIGHTTRAIN 836D)

SGRI S642

SGRI KENYA N325 (LWHF ABSOLUTE BLACK 352H)

CE	BW	WW	YW	Milk	TM	GL	CED
106	1.7	51	94	13	39	-1.2	109
SC	CW	REA	MB	DtF	CV	FM	
0.6	11	.05	-.08	5.7	7.50	24.59	
BW	Adj WW	Adj YW	SC				
94	731	1380					
ADG	FS	REA	BF	% IMF			
4.05	7.2	15.3	.27	2.70			

High performing bull with a bigger frame and the growth to go with it and a very useful 15.3" REA.

19 W336

Multi-Polled Red
3/19/09 50% GV, 50% AR

RAB BIEBER MAKE MIMI 7249 (BJR BJR MAKE MY DAY 981)
CTDB C-T BUFFALO HORN 0712
CTDB C-T VERDI 0502 (CPH GLACIER CHATEAU 744)

JCGR BAR GT LOUIE 2J (GKT BUD 11G)

SGRI T741

SGRI ANDREA P460 (SPUR BERETTA 703G)

CE	BW	WW	YW	Milk	TM	GL	CED
1.4	52	98	20	46	-1.5		
SC	CW	REA	MB	DtF	CV	FM	
							29.33
BW	Adj WW	Adj YW	SC				
104	831	1529					
ADG	FS	REA	BF	% IMF			
4.42	6.8	15.9	.27	3.55			

This bull is a hoss! Comes from a fantastic Louie x Beretta daughter that flat out got it done! Big time performance here! Wide and stout! Excellent gain and ribeye. Here is another herd bull Prospect for those of you that appreciate performance and muscle in your calves. Star him sale day!

21 W339

Multi-Polled Homo Black
3/20/09 Purebred

VRT LAZY TV COCOA J265 (TLR COCOA 35C)
BEA BLACK PERFECTION
BEA 833H (BEA POLLED PERFECTION)

LWHF ABSOLUTE BLACK 352H (JNS MR IMAGE 6E ET)

SGRI M20

JCB 895H (KRT LAZY TV BLACK OPAL)

CE	BW	WW	YW	Milk	TM	GL	CED
106	1.2	39	65	14	34	-1.1	107
SC	CW	REA	MB	DtF	CV	FM	
0.5	4	.02	-.04	4.4	6.02	-2.85	
BW	Adj WW	Adj YW	SC				
96	685	1144					
ADG	FS	REA	BF	% IMF			
2.87	6.2	14.4	.19	3.23			

Nice made bull with a big time REA/cwt. of 1.28! Last year we kept the heifer out of his dam as a replacement female.

XXB BIG N' RICH 911P ET



Sire of Lots: 22, 23, 25, 27, 28, 33, 36, 37, 42, 44, 49, 51, 54

CE	BW	WW	YW	Milk	TM	GL	CED
105	1.2	44	88	15	37	-.5	106
SC	CW	REA	MB	DtF	CV	FM	
EPDs	1.0	16	.07	-.17	10.2	5.38	24.31

23 W345

Multi-Polled Black
3/24/09 Purebred

XXB TITUS 880K (MRCO NEW DIRECTION 905)
XXB BIG N' RICH 911P ET
EGL G565 (EVE MR BEAU JANGLES 308B)

JCGR BAR GT LOUIE 2J (GKT BUD 11G)
SGRI GALE N315
SGRI GALE L216 (SGRI DAKOTA GENERATOR G240)

CE	BW	WW	YW	Milk	TM	GL	CED
104	0.9	42	81	17	38	-9	103
SC	CW	REA	MB	DtF	CV	FM	
0.7	15	.16	-.08	4.8	12.33	19.38	
BW	Adj WW	Adj YW	SC				
95	697	1335					
ADG	FS	REA	BF	% IMF			
3.99	6.5	16.3	.37	3.43			

Complete package! He does everything right! His dam has already raised a Beretta son working for Jim Beastro! This bull has tremendous base width and muscling. He's impressive! Dam has put all of her heifer calves back into the herd. Did you look at the bigtime 16.3" REA?? Here is a purebred that carries all the credentials for replacing his sire as a herd bull!

24 W346

Multi-Polled Red
3/24/09 50% GV, 50% AR

RAB BIEBER MAKE MIMI 7249 (BJR BJR MAKE MY DAY 981)
CTDB C-T BUFFALO HORN 0712
CTDB C-T VERDI 0502 (CPH GLACIER CHATEAU 744)

BEA BLACK PERFECTION (VRT LAZY TV COCOA J265)
SGRI T782
SGRI DOVER N362 (VRT LAZY TV AMADEUS K298)

CE	BW	WW	YW	Milk	TM	GL	CED
-1.9	44	92	20	42	-9		
SC	CW	REA	MB	DtF	CV	FM	
						30.30	
BW	Adj WW	Adj YW	SC				
90	761	1466					
ADG	FS	REA	BF	% IMF			
4.46	7.0	15.9	.34	4.37			

Check out the performance in this bull! 4.46#/day gain! 1466 yearling! 15.9 in. Ribeye! 4.37% IMF! Great Black Perfection x Amadaus daughter behind him! Ratio'd 95 BW, 109 WW, 115 YW, 110 REA, 118 %IMF!!!!

25 W347

Multi-Polled Black
3/24/09 Purebred

XXB TITUS 880K (MRCO NEW DIRECTION 905)
XXB BIG N' RICH 911P ET
EGL G565 (EVE MR BEAU JANGLES 308B)

LWHF SANTANA ET (HAD KNOCKOUT)
SGRI S645
SGRI KORIE N312 (SPUR BERETTA 703G)

CE	BW	WW	YW	Milk	TM	GL	CED
101	2.7	45	75	16	39	-5	103
SC	CW	REA	MB	DtF	CV	FM	
.7	17	.08	-.12	6.4	8.68	4.21	
BW	Adj WW	Adj YW	SC				
100	697	1169					
ADG	FS	REA	BF	% IMF			
2.95	6.6	14.4	.25	2.93			

Smooth made attractive bull with a great REA/cwt. ratio of 1.31 — THAT IS SPECIAL! S645's first calf was retained for a herd bull — it's in the genes.

26 W348

Polled/S Black
3/24/09 Purebred

KLBF KING OF THE HILL 16H (ELK FREIGHTTRAIN 836D)
SGRI M25
EGL C335 (KCF BENNETT HORIZON)

KIDS MR KEN (EGR D410)
SGRI KORIE L128
SGRI AUTUMN H861 (SGRI POLLED PROFILE F102)

CE	BW	WW	YW	Milk	TM	GL	CED
103	2.1	45	67	17	40	-1.3	105
SC	CW	REA	MB	DtF	CV	FM	
.4	1	.03	-.04	11	-5.45	-7.00	
BW	Adj WW	Adj YW	SC				
98	714	1293					
ADG	FS	REA	BF	% IMF			
3.62	6.5	16.9	.30	2.60			

High performing bull with a big top! Deep and soggy in his appearance! Expect nothing less from Hank influence females. Has a huge 16.9" REA and a marvelous 1.33/cwt. REA ratio!

SGRI M25



GELBVIEH

Sire of Lots: 26, 43, 48, 50

CE	BW	WW	YW	Milk	TM	GL	CED
100	3.4	56	76	14	42	-1.4	109
SC	CW	REA	MB	DtF	CV	FM	
EPDs	.4	6	.08	-.05	.4	.95	-7.18

27 W349

Polled/S Homo Black
3/25/09 75% GV, 25% AN

XXB TITUS 880K (MRCO NEW DIRECTION 905)
XXB BIG N' RICH 911P ET
EGL G565 (EVE MR BEAU JANGLES 308B)

BON VIEW NEW DESIGN 1407 (B/R NEW DESIGN 036)
SGRI S605
SGRI 7N ET (JNS MR IMAGE 6E ET)

CE	BW	WW	YW	Milk	TM	GL	CED
102	1.4	45	90	20	43	-.7	105
SC	CW	REA	MB	DtF	CV	FM	
.7	16	.07	.04	8	23.21	20.13	
BW	Adj WW	Adj YW	SC				
104	724	1290					
ADG	FS	REA	BF	% IMF			
3.56	6.6	16.3	.29	3.14			

Another good Big & Rich bull out of a high producing 1407 daughter! Good ribeye in this bull. Granddam, 7N ET, is a full sister to one our patriarch herdsires, Absolute Black.

28 W351

Multi-Polled Black
3/25/09 Purebred

XXB TITUS 880K (MRCO NEW DIRECTION 905)
XXB BIG N' RICH 911P ET
EGL G565 (EVE MR BEAU JANGLES 308B)

KLBF KING OF THE HILL 16H (ELK FREIGHTTRAIN 836D)
SGRI KACHINA P431
SGRI KACHINA K049 (LWHF ABSOLUTE BLACK 352H)

CE	BW	WW	YW	Milk	TM	GL	CED
107	.9	47	83	13	37	-1.6	108
SC	CW	REA	MB	DtF	CV	FM	
0.5	14	0.1	-.07	6.4	11.21	13.31	
BW	Adj WW	Adj YW	SC				
96	729	1269					
ADG	FS	REA	BF	% IMF			
3.37	7.4	17.0	.29	3.40			

One of the biggest ribeyes in the offering. P431's bull sold to Sid Meyers in 2007. Once again our breeding program over the years is represented here by Big N' Rich, Hank, and Absolute Black.

29 W352

Multi-Polled Red
3/25/09 50% GV, 50% AR

BUF BFCK CHEROKEE CNYN 4912 (VC BUF CRK CHF 824-1658)
KRN LCC MAJOR LEAGUE A502M
KRN KRN REBA'S ROBIN (JHL LMAN ROBIN HOOD 1174B)

KLBF KING OF THE HILL 16H (ELK FREIGHTTRAIN 836D)
SGRI BETTY M224
SGRI BETTY F659 (MTG MR T 22C)

CE	BW	WW	YW	Milk	TM	GL	CED
102	.4	53	91	18	45	-1.4	102
SC	CW	REA	MB	DtF	CV	FM	
8	-.16	.05	2.8	14.84	17.71		
BW	Adj WW	Adj YW	SC				
95	814	1423					
ADG	FS	REA	BF	% IMF			
3.86	6.9	14.7	.36	4.21			

This bull does a lot of things right! If you want performance to get those heavy weaning calves this bull is for you. Very docile disposition! He likes to get scratched! This rascal is a "showstopper" — wide based and nicely balanced from front to back.

30 W356

Multi-Polled Red
3/26/09 Purebred

BEA SILVERADO (LWHF FEARLESS)
BABR 553R
BABR 3031N (KKC 88K)

JRI PLD FREE AGENT 125J3 (SLC FREEDOM 178F ET)
SGRI HASSLE P401
SGRI HASSLE M226 (KLBF KING OF THE HILL 16H)

CE	BW	WW	YW	Milk	TM	GL	CED
105	1.8	48	84	15	39	-1.9	105
SC	CW	REA	MB	DtF	CV	FM	
0.5	6	-.06	-.07	3.6	.25	13.56	
BW	Adj WW	Adj YW	SC				
100	735	1377					
ADG	FS	REA	BF	% IMF			
4.01	6.9	14.6	.22	2.62			

Big stout, rugged bull full of performance! Nice upheaded attractive bull.

KRN LCC MAJOR LEAGUE A502M



Sire of Lot: 29

CE	BW	WW	YW	Milk	TM	GL	CED
106	-2.8	40	83	17	37	-2.3	99
SC	CW	REA	MB	DtF	CV	FM	
EPDs	.3	10	.31	.12	4.1	25.27	50.71

31 W358

Multi-Polled Red
3/27/09 Purebred

GKT BUD 11G (GKT BOO BOO 155E)
JCGR BAR GT LOUIE 2J
WRGA 049C (PGRS SHINING SPIRIT)

KLBF KING OF THE HILL 16H (ELK FREIGHTTRAIN 836D)
SGRI S664
SGRI LYNN H896 (MTG MR T 22C)

CE	BW	WW	YW	Milk	TM	GL	CED
106	.9	44	76	15	37	-1.6	105
SC	CW	REA	MB	DtF	CV	FM	
.4	17	.22	.01	.4	21.12	6.82	
BW	Adj WW	Adj YW	SC				
88	711	1329					
ADG	FS	REA	BF	% IMF			
3.86	6.1	17.4	.30	2.61			

After what this bull has done we have agreed that we need to get back to producing these Louie X Hank bulls again! Only one in the sale! Find him! Tied for largest rib-eye in the sale at 17.4 in²!!! Red herd bull buyers — pay attention here!

JCGR BAR GT LOUIE 2J



Sire of Lot: 31

CE	BW	WW	YW	Milk	TM	GL	CED
101	1.0	46	83	13	36	-2.7	101
SC	CW	REA	MB	DtF	CV	FM	
EPDs	.6	2	.38	.04	-.5	30.94	14.52

32 W360

Multi-Polled Red
3/28/09 50% GV, 50% AR

RED HEARTLAND KNIGHT CHARM 11L (RED YY RED KNIGHT 640F)
HFX RD TER-RON FULLY LOADED 540R
RED TER-RON GOLDIE 240L (RED LAZY MC DIVIDE 8J)

JRI PLD FREE AGENT 125J3 (SLC FREEDOM 178F ET)
SGRI HICKORY P408
SGRI HICKORY M229 (KLBF KING OF THE HILL 16H)

CE	BW	WW	YW	Milk	TM	GL	CED
	.3	38	70	12	31	-1.7	
SC	CW	REA	MB	DtF	CV	FM	
						5.37	
BW	Adj WW	Adj YW	SC				
96	731	1298					
ADG	FS	REA	BF	% IMF			
3.61	5.8	16.0	.24	4.27			

Fantastic cow family! Grandam has two daughters that put bulls in the sale! Her own King Rob daughter is as good as it gets in the replacement pen back on the ranch. Dark red Fully Loaded bull that is long, thick and deep. Moderate in his stature he stills offers ideal performance! Ratio'd 110 for REA, and 115 for %IMF! Good bull here!

34 W366

Multi-Polled Red
3/30/09 75% GV, 25% AR

CPH GLACIER CHATEAU 744 (LBC LMAN KING ROB 8621)
SGRI T311
SGRI PATTY 420P (KLBF KING OF THE HILL 16H)

KLBF KING OF THE HILL 16H (ELK FREIGHTTRAIN 836D)
SGRI EFFIE P421
SGRI EFFIE L101 (JHL LCHMN NEW ERA 8020D)

CE	BW	WW	YW	Milk	TM	GL	CED
107	-4	38	72	18	37	-1.5	108
SC	CW	REA	MB	DtF	CV	FM	
0	10	.08	-.06	2.7	6.99	8.23	
BW	Adj WW	Adj YW	SC				
92	684	1250					
ADG	FS	REA	BF	% IMF			
3.56	6.1	15.3	.22	2.45			

Double bred Hank!! It worked. Great balance with a big top! We sold P421's first calf to Ray Alsgaard in 2007.

35 W367

Multi-Polled Red
3/30/09 50% GV, 50% AR

RED HEARTLAND KNIGHT CHARM 11L (RED YY RED KNIGHT 640F)
HFX RD TER-RON FULLY LOADED 540R
RED TER-RON GOLDIE 240L (RED LAZY MC DIVIDE 8J)

KLBF KING OF THE HILL 16H (ELK FREIGHTTRAIN 836)
SGRI 38N
DMF 1712H (JBOB 254D)

CE	BW	WW	YW	Milk	TM	GL	CED
	1.1	41	66	11	32	-1.1	
SC	CW	REA	MB	DtF	CV	FM	
						-3.77	
BW	Adj WW	Adj YW	SC				
95	752	1228					
ADG	FS	REA	BF	% IMF			
3.03	6.0	16.8	.34	2.90			

Good Fully Loaded bull off a good producing moderate Hank daughter! Her first bull calf by Glacier Chateau was a sale feature selling to Jon Beaström! Big time ribeye! 116 ratio! And, the biggest REA/cwt. at 1.38!

33 W364

Multi-Polled Black
3/29/09 Purebred

XXB TITUS 880K (MRCO NEW DIRECTION 905)
XXB BIG N' RICH 911P ET
EGL G565 (EVE MR BEAU JANGLES 308B)

VRT LAZY TV AMADEUS K298 (SLC FREEDOM 178F ET)
SGRI BOBBI M267
SGRI BOBBI H803 (JHL LCHMN BETTER DEAL 2024D)

CE	BW	WW	YW	Milk	TM	GL	CED
108	.3	42	76	14	35	-1.2	106
SC	CW	REA	MB	DtF	CV	FM	
.6	14	.06	-.16	6.8	2.88	9.20	
BW	Adj WW	Adj YW	SC				
96	694	1240					
ADG	FS	REA	BF	% IMF			
3.41	6.8	12.9	.30	2.94			

Very eye appealing phenotype to this good bull — like most of the Big N' Rich bulls, this bull also has a small attractive "Angus" head.

KLBF KING OF THE HILL 16H "HANK"



*** Influence Sire Thoughtout Our Offering ***

CE	BW	WW	YW	Milk	TM	GL	CED
99	3.8	56	93	11	39	-1.9	113
SC	CW	REA	MB	DtF	CV	FM	
EPDs	-.1	13	.05	.01	2.5	16.47	16.99

36 W368

Multi-Polled Red
3/31/09 75% GV, 25% AR

XXB TITUS 880K (MRCO NEW DIRECTION 905)
XXB BIG N' RICH 911P ET
EGL G565 (EVE MR BEAU JANGLES 308B)

CPH GLACIER CHATEAU 744 (LBC LMAN KING ROB 8621)
SGRI SCANDAL M202
SGRI K089 (KCF BENNETT D57)

CE	BW	WW	YW	Milk	TM	GL	CED
108	-0.7	41	83	20	41	-.3	104
SC	CW	REA	MB	DtF	CV	FM	
.6	12	0.1	-.11	5.1	6.32	20.60	
BW	Adj WW	Adj YW	SC				
90	679	1203					
ADG	FS	REA	BF	% IMF			
3.31	6.6	16.0	.23	3.63			

Two full brothers have sold in past sales, 2009 to Ray Vorhes and 2008 to Brian Winter. We have kept all of her heifer calves in the herd. Good ribeye in this nicely made bull! No miss cow.

37 W371

Multi-Polled Red
4/1/09 Purebred

XXB TITUS 880K (MRCO NEW DIRECTION 905)
XXB BIG N' RICH 911P ET
EGL G565 (EVE MR BEAU JANGLES 308B)

KLBF KING OF THE HILL 16H (ELK FREIGHTTRAIN 836D)
SGRI ALLEY P422
SGRI G727 (BRDR BLACK POWDER 1029A)

CE	BW	WW	YW	Milk	TM	GL	CED
104	1.5	45	79	14	37	-2.1	107
SC	CW	REA	MB	DtF	CV	FM	
0.5	12	.05	-.08	6.9	7.63	9.93	
BW	Adj WW	Adj YW	SC				
97	743	1283					
ADG	FS	REA	BF	% IMF			
3.37	6.9	14.7	.23	2.89			

Good red Big N' Rich x Hank bull! These Hank daughters have made great foundation cows for us. Has a birthmark on his side! Excellent disposition. Lots 36 and 37 would make very similar "pasture mates" — lots in common!

38 W374

Multi-Polled Red
4/2/09 50% GV, 50% AR

RED HEARTLAND KNIGHT CHARM 11L (RED YY RED KNIGHT 640F)
HFX RD TER-RON FULLY LOADED 540R
RED TER-RON GOLDIE 240L (RED LAZY MC DIVIDE 8J)

KLBF KING OF THE HILL 16H (ELK FREIGHTTRAIN 836D)
SGRI RITA N344
SGRI RITA H915 (JCB 312C)

CE	BW	WW	YW	Milk	TM	GL	CED
	1.6	39	65	10	30	-.9	
SC	CW	REA	MB	DtF	CV	FM	
						-2.85	
BW	Adj WW	Adj YW	SC				
104	735	1246					
ADG	FS	REA	BF	% IMF			
3.25	6.9	13.4	.23	2.98			

Lot 38's sire, Fully Loaded, is the \$140,000 bull seeing service in the Six Mile Red Angus operation, Canada. Dam has been a solid and consistent producer! Big, stout Fully Loaded bull! Long bodied, stylish, and still has substance. Sold her bull last year to Ted Waltner.

39 W376

Double Polled Red
4/2/09 50% GV, 50% AR

RED COMPASS MULBERRY 449M (RED HR RAMBO ET 91K)
NVG RED FINE LINE MULBERRY 26P
RED DUS FAYETTE 8G (RED SILVEIRAS REDFORD)

KLBF KING OF THE HILL 16H (ELK FREIGHTTRAIN 836D)
SGRI ABBIE P470
ECC 614B (ECC POLLED BLITZ)

CE	BW	WW	YW	Milk	TM	GL	CED
	0.1	38	75	13	32	-.4	
SC	CW	REA	MB	DtF	CV	FM	
						12.55	
BW	Adj WW	Adj YW	SC				
96	628	1180					
ADG	FS	REA	BF	% IMF			
3.51	6.3	14.9	.29	3.95			

Yet another good Hank influence bull calf with a big REA/cwt. ratio and a very respectable 3.95% IMF.

40 W378

Multi-Polled Red
4/2/09 Purebred

BEA SILVERADO (LWHF FEARLESS)
BABR 553R
BABR 3031N (KKC 88K)

KLBF KING OF THE HILL 16H (ELK FREIGHTTRAIN 836D)
SGRI S665
SGRI KATLYN L142 (KIDS MR KEN)

CE	BW	WW	YW	Milk	TM	GL	CED
105	2.8	53	85	15	42	-1.3	106
SC	CW	REA	MB	DtF	CV	FM	
0.4	7	.02	0	1.9	7.44	9.01	
BW	Adj WW	Adj YW	SC				
92	754	1309					
ADG	FS	REA	BF	% IMF			
3.47	6.7	14.6	.22	2.58			

553 x Hank! We thought this would be a good combination and it has! Couple other bulls in the sale bred the same way and they are good too! All have heavy skeletal rear leg structure and wide based as they travel toward you.

41 W388

Multi-Polled Red
4/5/09 Purebred

BEA SILVERADO (LWHF FEARLESS)
BABR 553R
BABR 3031N (KKC 88K)

KLBF KING OF THE HILL 16H (ELK FREIGHTTRAIN 836D)
SGRI DELLA N336
SGRI DELLA H800 (JHL LCHMN BETTER DEAL 2024D)

CE	BW	WW	YW	Milk	TM	GL	CED
103	2.9	51	84	14	40	-1.4	107
SC	CW	REA	MB	DtF	CV	FM	
0.4	7	-.01	-.01	2.2	6.50	9.96	
BW	Adj WW	Adj YW	SC				
98	685	1205					
ADG	FS	REA	BF	% IMF			
3.25	6.4	13.8	.17	2.44			

This combo works! The bulls look like bulls are supposed to and the heifers are broody yet attractive. Just calved out our first females bred the same way as these 553 x Hank bulls! Great udders, docile dispositions, and great mothering ability.

DISPOSITION MATTERS!!



Some of the performance measures that are impacted by temperament are health, feed efficiency, weight gain, dressing percentage and meat quality.

42 W390

Multi-Polled Red
4/5/09 Purebred

XXB TITUS 880K (MRCO NEW DIRECTION 905)
XXB BIG N' RICH 911P ET
EGL G565 (EVE MR BEAU JANGLES 308B)

VRT LAZY TV AMADEUS K298 (SLC FREEDOM 178F ET)
SGRI HOLLY P438
SGRI HOLLY L109 (KLBF KING OF THE HILL 16H)

CE	BW	WW	YW	Milk	TM	GL	CED
101	2.9	50	93	15	40	-1.1	103
SC	CW	REA	MB	DtF	CV	FM	
.6	15	0.1	-.13	6.4	7.83	24.34	
BW	Adj WW	Adj YW	SC				
106	730	1335					
ADG	FS	REA	BF	% IMF			
3.78	7.4	15.6	.24	3.86			

Big, stout Big N' Rich bull that has one of my favorite cows on the place to claim as his dam. Great performance!



HANK SON



HANK/RUBY RED



ROLEX/HANK

**"HANK"
INFLUENCE
PROGENY**

43 W392

Multi-Polled Black
4/6/09 Purebred

KLBF KING OF THE HILL 16H (ELK FREIGHTTRAIN 836D)
SGRI M25
EGL C335 (KCF BENNETT HORIZON)

LWHF ABSOLUTE BLACK 352H (JNS MR IMAGE 6E ET)
SGRI ANNA L104
SGRI MISS KITTY J927 (ELK BK PLD CHEYENNE 3072F ET)

CE	BW	WW	YW	Milk	TM	GL	CED
114	-1.5	43	55	13	35	-1.6	111
SC	CW	REA	MB	DtF	CV	FM	
0.2	3	.05	0	2.4	-.18	-21.03	
BW	Adj WW	Adj YW	SC				
90	748	1233					
ADG	FS	REA	BF	% IMF			
3.03	6.6	15.6	.33	2.67			

Appreciate his mass, volume, and skeletal structure. Dam's first bull sold to Terry Koupal. Has a 1.30 REA/cwt. ratio!!

44 W395

Multi-Polled Red
4/6/09 Purebred

XXB TITUS 880K (MRCO NEW DIRECTION 905)
XXB BIG N' RICH 911P ET
EGL G565 (EVE MR BEAU JANGLES 308B)

CKA WOODLAND RAMBLER 562E (RAM RAMBLER 590Y)
SGRI RHONDA L180
AAF 114C (MTS JESTER)

CE	BW	WW	YW	Milk	TM	GL	CED
105	1.9	41	76	18	39	-.3	102
SC	CW	REA	MB	DtF	CV	FM	
.5	11	.03	-.1	3.8	4.55	10.40	
BW	Adj WW	Adj YW	SC				
104	708	1272					
ADG	FS	REA	BF	% IMF			
3.52	6.7	15.2	.23	3.10			

Deep, stout, and big barreled!

45 W408

Double Polled Red
4/10/09 75% GV, 25% AR

CPH GLACIER CHATEAU 744 (LBC LMAN KING ROB 8621)
SGRI T311
SGRI PATTY 420P (KLBF KING OF THE HILL 16H)

PTC PACIFIC DOUBLE 731B (TVG MINNESOTA DOUBLE)
SGRI PAIGE J931
AFT 817B (AFT 165Z)

CE	BW	WW	YW	Milk	TM	GL	CED
107	-.2	35	61	20	38	-.7	106
SC	CW	REA	MB	DtF	CV	FM	
-.2	8	-.02	-.04	-.2	4.23	-3.80	
BW	Adj WW	Adj YW	SC				
96	709	1266					
ADG	FS	REA	BF	% IMF			
3.51	6.6	15.5	.30	3.09			

As usual, as one gets toward the end of the sale catalog, the footnotes become shorter! But, don't overlook this bull because his beautifully balanced EPDs and big 15.5" REA should get your attention.

46 W412

Multi-Polled Red
4/12/09 Purebred

BEA SILVERADO (LWHF FEARLESS)
BABR 553R
BABR 3031N (KKC 88K)

KLBF KING OF THE HILL 16H (ELK FREIGHTTRAIN 836D)
SGRI KANDRA P424
SGRI KANDRA J973 (KIDS MR KEN)

CE	BW	WW	YW	Milk	TM	GL	CED
99	4.7	58	94	14	43	-1.1	105
SC	CW	REA	MB	DtF	CV	FM	
.4	7	.02	0	1.9	7.90	16.03	
BW	Adj WW	Adj YW	SC				
106	773	1380					
ADG	FS	REA	BF	% IMF			
3.80	7.0	16.2	.39	2.05			

Dark red and full of performance! My favorite 553 calf in the pen! Check out the 16.2" REA! Recall that his great grandsire, Fearless, is the all time high selling bull in the breed at \$85,000.

47 W415

Multi-Polled/S
4/13/09 Homo Black
Purebred

VRT LAZY TV COCOA J265 (TLR COCOA 35C)

BEA BLACK PERFECTION

BEA 833H (BEA POLLED PERFECTION)

RTC ATLAS 712G (TLR COCOA 35C)

SGRI CLEO P418

SGRI CLEO M278 (KIDS MR KEN)

CE	BW	WW	YW	Milk	TM	GL	CED
101	3.3	54	89	17	44	-4	105
SC	CW	REA	MB	DtF	CV	FM	
-4	3	.05	0	4.7	2.60	13.58	
BW	Adj WW	Adj YW	SC				
100	768	1284					
ADG	FS	REA	BF	% IMF			
3.22	6.6	16.1	.19	2.30			

Double bred to great Cocoa bull yet keeps his frame in check! Tremendous thickness and top in this bull! The infamous Cocoa bull was a two time National Champion.

49 W426

Multi-Polled
4/17/09 Black
Purebred

XXB TITUS 880K (MRCO NEW DIRECTION 905)

XXB BIG N' RICH 911P ET

EGL G565 (EVE MR BEAU JANGLES 308B)

JCGR BAR GT LOUIE 2J (GKT BUD 11G)

SGRI HICKORY R526

SGRI HICKORY M229 (KLBF KING OF THE HILL 16H)

CE	BW	WW	YW	Milk	TM	GL	CED
104	1.9	50	91	18	43	-1.3	106
SC	CW	REA	MB	DtF	CV	FM	
0.8	23	.15	-.07	4.5	18.88	21.38	
BW	Adj WW	Adj YW	SC				
97	734	1317					
ADG	FS	REA	BF	% IMF			
3.65	7.1	14.8	.24	2.93			

Great cow family! Good performance for those market topping steers and maternally as good as it gets if you are looking to keep replacements! Really have to appreciate his muscle pattern.

"I prefer to buy all Continental-British cross cattle. As I see cattle come in the feedlot, there is a big advantage to Gelbvieh cross cattle for their cutability and performance. Color doesn't make as much of a difference in the feedyard, it's conversion and average daily gain that drive price and Gelbvieh cross cattle are outstanding in that regard."

Bill Sleigh, manager of Hays Feeders, Hays, KS

"The Gelbvieh-Angus cross produces a superior product, far better than other Continental-British crosses. The Gelbvieh bring the quiet disposition, moderate mature cow size, and strong maternal qualities to the females."

Robert Beatty, Pleasant Hill, MO

48 W425

Multi-Polled
4/17/09 Black
Purebred

KLBF KING OF THE HILL 16H (ELK FREIGHTTRAIN 836D)

SGRI M25

EGL C335 (KCF BENNETT HORIZON)

JCGR BAR GT LOUIE 2J (GKT BUD 11G)

SGRI S666

SGRI NITE GOWN G756 (WAC ELK NIGHT RYDER 522E ET)

CE	BW	WW	YW	Milk	TM	GL	CED
96	4.3	56	83	16	44	-1.4	103
SC	CW	REA	MB	DtF	CV	FM	
0.4	9	.14	-.01	0.1	9.46	2.60	
BW	Adj WW	Adj YW	SC				
104	778	1318					
ADG	FS	REA	BF	% IMF			
3.37	6.5	15.6	.29	1.66			

These younger bulls are good! Good ribeye at 15.6 in! 112 WW ratio! I'm not certain if there ever has been a bull with more length, more depth of rib and more natural muscling than M25 (this bull's sire)!!

50 W427

Multi-Polled
4/18/09 Red
Purebred

KLBF KING OF THE HILL 16H (ELK FREIGHTTRAIN 836D)

SGRI M25

EGL C335 (KCF BENNETT HORIZON)

VRT LAZY TV AMADEUS K298 (SLC FREEDOM 178F ET)

SGRI MISS AMADEUS P469

SGRI H845 (JRI PD RESOURCE 197E51)

CE	BW	WW	YW	Milk	TM	GL	CED
103	2.1	54	81	18	45	-1.6	104
SC	CW	REA	MB	DtF	CV	FM	
0.5	14	.11	-.1	1.5	7.26	2.12	
BW	Adj WW	Adj YW	SC				
102	769	1333					
ADG	FS	REA	BF	% IMF			
3.52	6.7	17.4	.24	3.59			

Great cow family! Deep and rugged! Tied for largest ribeye in the offering at 17.4 in! that ratios at 1.34! 2008 Big N' Rich son of P469 sold to Dale Tennon.

51 W431

Multi-Polled
4/22/09 Black
Purebred

XXB TITUS 880K (MRCO NEW DIRECTION 905)

XXB BIG N' RICH 911P ET

EGL G565 (EVE MR BEAU JANGLES 308B)

KLBF KING OF THE HILL 16H (ELK FREIGHTTRAIN 836D)

SGRI HOPE L155

SGRI JACKIE F633 (AFT 579B)

CE	BW	WW	YW	Milk	TM	GL	CED
105	2.0	47	83	13	37	-.8	108
SC	CW	REA	MB	DtF	CV	FM	
.5	11	.04	-.07	5.7	7.43	13.31	
BW	Adj WW	Adj YW	SC				
98	725	1261					
ADG	FS	REA	BF	% IMF			
3.35	6.2	15.0	.37	3.24			

A good young bull out of our senior herd-sire Big N' Rich! High performing and a good ribeye! He is solid! This may be the time to remember that Big N' Rich was not only the Reserve National Champion Bull but he was also the Breeder's Choice Bull Futurity Champion. He has done an admirable job for the entire breed.

52 W432

Polled/S
4/23/09 Red
Purebred

VRT LAZY TV COCOA J265 (TLR COCOA 35C)

BEA BLACK PERFECTION

BEA 833H (BEA POLLED PERFECTION)

LWHF ABSOLUTE BLACK 352H (JNS MR IMAGE 6E ET)

SGRI SERENITY P455

SGRI SERENITY H836 (WAC ELK NIGHT RYDER 522E ET)

CE	BW	WW	YW	Milk	TM	GL	CED
103	2.7	47	77	16	40	-1.1	106
SC	CW	REA	MB	DIF	CV	FM	
.4	6	.04	.02	3.8	7.79	4.70	
BW	Adj WW	Adj YW	SC				
102	743	1300					
ADG	FS	REA	BF	% IMF			
3.48	6.7	15.0	.25	2.85			

Deep, soggy middle with a big hip! Outcross red genetics for most pedigrees! Last year a full brother sold to Overmiller Gelvieve, Kansas. At weaning he was just a bit past 5 months of age; so, he started off rather slowly but boy did he kick it in gear the second half of the test!

53 W433

Multi-Polled
4/24/09 Homo. Black
Purebred

VRT LAZY TV COCOA J265 (TLR COCOA 35C)

BEA BLACK PERFECTION

BEA 833H (BEA POLLED PERFECTION)

LWHF ABSOLUTE BLACK 352H (JNS MR IMAGE 6E ET)

SGRI CHELSEA P468

SGRI CHELSEA H873 (EGR E553)

CE	BW	WW	YW	Milk	TM	GL	CED
106	1.9	49	83	14	39	-.6	105
SC	CW	REA	MB	DIF	CV	FM	
.6		.06	.02	4.6	7.08	10.91	
BW	Adj WW	Adj YW	SC				
90	755	1264					
ADG	FS	REA	BF	% IMF			
3.18	6.8	16.0	.21	3.13			

He can boast about his 1.31 REA/cwt. ratio because of his dandy 16.0" ribeye.

HEARTFELT THANK YOU FOR CONSIDERING OUR BULLS FOR YOUR BREEDING PROGRAM!

Can't attend? Give Mettler Sale Management a call, we will handle your bids professionally and confidentially.

★★ SATISFACTION GUARANTEED ★★



147 DAY FEED TEST

FOR A "REAL WORLD"
"COMMON SENSE" FEED TEST,
LOOK TO SCHROEDER RANCH --
147 DAYS!!!!

54 ACKG WINCHESTER 1W ET

H-Polled Red
1/1/09 75% GV, 25% AR

XXB TITUS 880K (MRCO NEW DIRECTION 905)

XXB BIG N' RICH 911P ET

EGL G565 (EVE MR BEAU JANGLES 308B)

TMAS TMAS MR CHEROKEE (BUF BFCK CHEROKEE CNYN)

BEA 5039R "LOLA"

BEA 3049N (JGW 3R 178F FREEDOM 336K)

CE	BW	WW	YW	Milk	TM	GL	CED
103	1.9	45	88	18	41	-.9	102
SC	CW	REA	MB	DIF	CV	FM	
.7						23.08	
BW	Adj WW	Adj YW	SC				
97	771	NA					
ADG	FS	REA	BF	% IMF			

Homozygous polled (diluter free) red bull owned with A&C Gelbvieh and Mettler Gelbvieh that is a product of "royal" breeding: Big N' Rich, the Breeder's Choice Bull Futurity Champion and Reserve National Champion and Dam = "LOLA," the Supreme Champion overall breeds at the Black Hills Stock Show!!!



WINCHESTER
Lot 54



"LOLA"
Dam of Lot 54



FUTURITY RUNNER-UP ~ 2001



CHAMPION PEN OF 3 BULLS



2004 ~ FARM SHOW CHAMPION



LOUIE HEIFER ~ 2005



2004 ~ FARM SHOW CHAMPION



FUTURITY CHAMPION ~ 2005

LOOKING FOR SALE BULL PHOTOS??

Mother Nature failed to cooperate!

Go to www.schroedercattle.com for sale bull photos



Mettler Sale Management

Jerry Mettler David Mettler

28884 480th Avenue
Canton, South Dakota 57013
(605) 987-2114

Prepared especially for:

FIRST CLASS

"Bring catalog to sale with you"



TRI-STATE
graphics

309 W. 43rd St. • Sioux Falls, SD 57105
(605) 335-7300