



Schroeder Ranch



10th Annual GELBUIEH BULL SALE "STAR GAZING"

Saturday, April 5, 2008

2 pm CDT

Mitchell Livestock Auction
Mitchell, SD

SELLING:

40 BULLS

20 COMMERCIAL HEIFERS



**SCHROEDER
RANCH**

1800 West 50th Street
Sioux Falls, SD 57105
605/366-5693 or 605/359-0235
www.schroedercattle.com

*Performance
Tested and
"measured"
so you can
manage the
information!*



Sale managed by:
Mettler Sale Management
Jerry Mettler David Mettler

28884 480th Avenue
Canton, South Dakota 57013
(605) 987-2114 or Fax (605) 987-5384
www.mettlersales.com

SCHROEDER BULLS

“Bred For Performance”

★ STAR POWER ★

We measure it -- so you can manage it!!

- Schroeder Ranch explanation of the important measurement traits found in the Sale Catalog:

ASTRONOMY CHART

- EPDs**Expected Progeny Differences
(breed average): For active sires:
- CE**Calving Ease (104)
- BW**Birth Weight (1.4)
- WW**Weaning Weight (41)
- YW**Yearling Weight (74)
- MK**Milk (17)
- TM**Total Maternal (38)
- GL**Gestation Length (-1.5)
- CED**Daughter's Calving Ease (104)
- SC**Scrotal Circumference (0.4)
- ST**Stayability (cow's ability to produce a calf after age 6) (5)
- CW**Carcass Weight (6)
- REA**Ribeye Area (.06)
- MB**Marbling (-0.04)
- DfT**Days to Finish (3.5)
- CV**Carcass Value (2.54)
- FM**Feedlot Merit (extra dollars based on pounds gained from Weaning Weight to Yearling Weight (7.26)

CONTACT SALE MANAGERS if you need assistance with making purchases!

SALE MANAGER:



Mettler Sale Management
Jerry Mettler David Mettler

28884 480th Avenue
Canton, South Dakota 57013
(605) 987-2114 or Fax (605) 987-5384
www.mettlersales.com

Find catalog and sale results online at

Welcome Beef Producers to our 10th Annual Gelbvieh Bull Sale

This year we will be offering 40+ Gelbvieh and Balancer bulls along with 20 open commercial heifers. We have strive *“to provide bulls that perform and females that produce”* and we feel this year's offering reflects this.

As you look through this year's catalogue you will see that all the bulls have been DNA tested for marbling, tenderness, and feed efficiency. The black bulls have been tested for homo black and are so marked. We have always emphasized the maternal sire of our bulls while introducing several new genetics on the sire side of the cattle. Look through the catalogue and study the information, I'm sure you will find several bulls that meet your selection criteria. All bulls will have complete Ultra sound data available sale day to go along with our performance test, semen test, and DNA tests.

Thanks again for those of you who have bought bulls in the past, and to those of you that have not seen our cattle in the past, thank you for taking the time to study and evaluate the bulls we have for sale. If you have any questions or would like to view the sale offering prior to the sale, please contact me at 605-366-5693 or Dustin Tolsma at 605-539-0235. I look forward to seeing you April 5th.

Sincerely,
Steve

Find us at:
www.schroedercattle.com

SALE LOCATION: Take the Mitchell Exit #332 off I-90 and go south. Take the 1st left and follow the road east to Mitchell Livestock (straight East of Cabela's).

HEALTH: Bulls are fertility tested, scrotal measured, poured and vaccinated!

ULTRASOUND DATA: All bulls will be ultrasounded.

DNA TESTING: All double black bulls have been DNA tested for coat color. Homozygous black bulls will be identified.

FREE CARE of your purchase(s) until delivery -- we would like to continue to “develop” the bulls for you! Leave your trailer at home -- we'll have them “ready” for turn out for you.

RING SERVICE:

Jeff Kapperman, *Tri-State Neighbor*
Val Luckett, *Mitchell Livestock*

AUCTIONEER: Kevin Thompson
Ozark, MO

MOTEL: Super 8 Motel • 605/996-9678
Kelly Inn • 605/995-0500

SALE DAY PHONES:
Mitchell Livestock • 605/996-6543
Schroeder Cell • 605/366-5693
Mettler Cell • 605/366-4192; 605/321-9848

SCHROEDER RANCH BULLS – We measure it ~ You manage it!!



SGRI Astronaut T300 Balancer®

2/5/07 • Multi-Polled • Black

B/R New Design 036
Bon View New Design 1407
 Bon View Pride 664

BTI Extra 2106K ET
SGRI Keesha R513
 SGRI Keesha N347 (Amadeus)

Out of a 1st calf heifer going back to the K028 cow family. This bull blends the best of Angus and Gelbvieh Genetics. This bull should work on growthy heifers.

CE	BW	WW	YW	Milk	TM	GL	CED
104	-2.7	40	87	22	42	-1.4	102
SC	CW	REA	MB	DtF	CV	FM	
0.4	9	-0.02	0.12	3.8	21.68	27.78	
BW	Adj WW	Adj YW	SC				
85	637	1254	41				
ADG	WDA	REA	BF	% IMF			
3.91	3.24	15.1	.23	1.57			
QG1	QG2	GQ3	QG4	QG GPD			
0	0	★	0	5.2			
	T1	T2	T3	T GPD			
GeneSTI-R	★	★	★	-1.1			
FE1	FE2	FE3	FE4	FE GPD			
★★	★★	★★	0	-3.52			



Lot 1



Lot 2



SGRI Meteor T301 Balancer®

2/5/07 • Multi-Polled • Red

VC Buf Crk Chf 824-1658
BTK Milk Crk Capstone 901
 BTK Milk Crk Blockanna 768

BTI Extra 2106K ET
SGRI Della R511
 SGRI Della N336 (Hank)

This bulls grandmother has Lot 43 in the sale. Light birth wts. Large scrotal strong cow family. Look him up. 7 ★ Feed Efficiency!!

CE	BW	WW	YW	Milk	TM	GL	CED
103	-1.7	35	76	16	34	-1.2	104
SC	CW	REA	MB	DtF	CV	FM	
	3	0.04	0	2	3.03	17.64	
BW	Adj WW	Adj YW	SC				
86	639	1280	44				
ADG	WDA	REA	BF	% IMF			
4.06	3.31	13.0	.25	2.54			
QG1	QG2	GQ3	QG4	QG GPD			
0	0	0	0	0			
	T1	T2	T3	T GPD			
GeneSTI-R	★★	0	★	-1.1			
FE1	FE2	FE3	FE4	FE GPD			
★★	★★	★★	★	-3.74			



SGRI Mars T302 Balancer®

2/7/07 • Multi-Polled • Red

VC Buf Crk Chf 824-1658
BTK Milk Crk Capstone 901
 BTK Milk Crk Blockanna 768

BTI Red Alert 2077K
SGRI Frau R502
 SGRI M30 (Hank)

Another Capstone calf that puts everything together with a 4# gain. Smooth attractive made bull. CE of 106 makes him a heifer bull candidate.

CE	BW	WW	YW	Milk	TM	GL	CED
106	-1.7	35	74	16	34	-2	
SC	CW	REA	MB	DtF	CV	FM	
	6	0.1	-0.01	2.2	6.74	14.72	
BW	Adj WW	Adj YW	SC				
89	630	1261	38.5				
ADG	WDA	REA	BF	% IMF			
4.00	3.26	12.7	.20	1.05			
QG1	QG2	GQ3	QG4	QG GPD			
0	0	0	★	5.0			
	T1	T2	T3	T GPD			
GeneSTI-R	★★	0	★	-1.1			
FE1	FE2	FE3	FE4	FE GPD			
★★	★★	★★	0	-3.52			



Lot 3

SCHROEDER RANCH BULLS – We measure it ~ You manage it!!



4

SGRI Mercury T304 Balancer®

2/8/07 • Multi-Polled • Homozygous Black

TC Stockman 365
G 13 Structure
 G 13 Traveler 9428

SPUR Beretta 703G
SGRI Rita R504
 SGRI Rita N344 (Hank)

Homozygous Black and good. The only G13 Structure calf in the sale. Check out his Genestars then check out this calf sale day. Strong tenderness DNA profile!

CE	BW	WW	YW	Milk	TM	GL	CED
106	-1.5	38	68	19	38	-1.9	105
SC	CW	REA	MB	DtF	CV	FM	
	2	0	-0.01	-0.1	-.97	2.53	
BW	Adj WW	Adj YW	SC				
83	688	1195	40				
ADG	WDA	REA	BF	% IMF			
3.23	3.11	13.0	.20	1.92			
QG1	QG2	QG3	QG4	QG GPD			
0	★	0	0	1.44			
GeneStar		T1	T2	T3	T GPD		
★		★	★	★	-1.8		
FE1	FE2	FE3	FE4	FE GPD			
★	★	★	0	-2.68			



Lot 4



Lot 5



5

SGRI Comet T305 Balancer®

2/9/07 • Multi-Polled • Homozygous Black

SVF Gdar 216 LTD
S A F Connection
 S A F Royal queen 5084

LWHF Fearless
SGRI Hott Damn 410P ET
 AHL Hott Damn 31L (Ideal)

Homozygous Black out of a 1st calf heifer. Look past the short ears and see the red meat in this bull. Gaining 4.25#/day. Fearless is the all-time high selling bull in the GV breed and Hot Damn is an elite donor female — quality!!

CE	BW	WW	YW	Milk	TM	GL	CED
104	-2.4	38	79	21	40	-0.9	
SC	CW	REA	MB	DtF	CV	FM	
	2	0.02	0.05	2.4	5.43	18.38	
BW	Adj WW	Adj YW	SC				
84	630	1301	38				
ADG	WDA	REA	BF	% IMF			
4.25	3.42	14.3	.41	2.17			
QG1	QG2	QG3	QG4	QG GPD			
0	0	0	0	0			
GeneStar		T1	T2	T3	T GPD		
★		0	★	★	-0.7		
FE1	FE2	FE3	FE4	FE GPD			
★	★	★	0	-3.28			



Lot 6



6

SGRI Apollo T307 Balancer®

2/9/07 • Multi-Polled • Black

B/R New Design 036
Bon View New Design 1407
 Bon View Pride 664

JCGR Bar GT Louie 2J
SGRI Renee R529
 GDJ 600F (Otis)

One of Dustin's favorites. This calf does alot of things right. His grandmother has Lot 40 in the sale. Make sure you find him sale day. His sire, 1407, one of the most highly used Angus bulls in the country because of his calving ease and strong maternal qualities.

CE	BW	WW	YW	Milk	TM	GL	CED
101	-0.9	43	94	25	47	-1.7	101
SC	CW	REA	MB	DtF	CV	FM	
0.5	14	0.1	0.16	2.8	32.65	34.58	
BW	Adj WW	Adj YW	SC				
90	684	1347	39				
ADG	WDA	REA	BF	% IMF			
4.20	3.51	14.6	.32	1.30			
QG1	QG2	QG3	QG4	QG GPD			
0	★	★	0	6.64			
GeneStar		T1	T2	T3	T GPD		
★		0	0	0	-0.3		
FE1	FE2	FE3	FE4	FE GPD			
★	★	★	0	-2.93			

SCHROEDER RANCH BULLS - We measure it ~ You manage it!!



SGRI Universe T308 Balancer®

2/10/07 • Multi-Polled • Red

WF Beckton Julian GG B571
VC Buf Crk Romeo L081
 VC Buf Crk Primrose 5679

KLBF King of the Hill 16H "Hank"
SGRI Keegan R543
 SGRI Keegan M250 (Ken)

Soggy best describes this bull. A red Angus/Gelbvieh balancer with a ton of capacity. Check out his Genestar results.

CE	BW	WW	YW	Milk	TM	GL	CED
104	-0.9	39	81	18	38	-1.1	105
SC	CW	REA	MB	DtF	CV	FM	
0.1	8	0.11	0.04	1	13.94	20.10	
BW	Adj WW	Adj YW	SC				
84	688	1309	43				
ADG	WDA	REA	BF	% IMF			
3.94	3.40	14.9	.36	2.34			
QG1	QG2	QG3	QG4	QG GPD			
0	★	0	★	6.44			
GeneStar		T1	T2	T3	T GPD		
★		★	★★	-1.5			
FE1	FE2	FE3	FE4	FE GPD			
★★	★★	★★	★	-3.74			



Lot 7



Lot 8



SGRI Galaxy T309 ET Balancer®

2/10/07 • Multi-Polled • Red

GKT Bud 11G
JCGR Bar GT Louie 2J
 WRGA 049C

CPH Glacier Chateau 744
SGRI Splendor M211
 SGRI K026 (Dak. Generator)

An ET calf out of our donor M211. Big ribbed high performing Louie son. Don't miss this calf sale day. 75% GV, 25% AR strong performance EPD's.

CE	BW	WW	YW	Milk	TM	GL	CED
101	1.5	55	103	20	48	-1.4	101
SC	CW	REA	MB	DtF	CV	FM	
0.3	11	0.21	-0.01	0.4	15.01	33.11	
BW	Adj WW	Adj YW	SC				
96	624	1265	39.5				
ADG	WDA	REA	BF	% IMF			
4.04	3.52	15.9	.2	1.78			
QG1	QG2	QG3	QG4	QG GPD			
★	0	★	★	15.49			
GeneStar		T1	T2	T3	T GPD		
★★		0	0	-0.7			
FE1	FE2	FE3	FE4	FE GPD			
★	★★	★★	★	-3.15			



SGRI Constellation T310 ET Purebred

2/11/07 • Multi-Polled • Red

ELK Freighttrain 836D
 KLBF King of the Hill 16H "Hank"
 KLBF Gold Fund

SLC Freedom 178F ET
CTR Ruby Red 195L
 CTR Cedar Top's Banquet (Tom Horn)

Style, performance, pedigree. Constellation flush mate sisters shined at the Iowa Beef Expo in 2007 topping the sale and going to Rush Farm in Missouri and Dromgoole Heaven in Texas.

CE	BW	WW	YW	Milk	TM	GL	CED
99	3	46	83	13	36	-2.5	107
SC	CW	REA	MB	DtF	CV	FM	
0.1	8	0.05	-0.07	4.1	3.90	14.52	
BW	Adj WW	Adj YW	SC				
103	682	1330	39				
ADG	WDA	REA	BF	% IMF			
4.05	3.62	13.8	.26	1.50			
QG1	QG2	QG3	QG4	QG GPD			
0	0	0	0	0			
GeneStar		T1	T2	T3	T GPD		
★★		0	★	-1.1			
FE1	FE2	FE3	FE4	FE GPD			
★★	★★	★★	★	-3.74			



Lot 9

SCHROEDER RANCH BULLS – We measure it ~ You manage it!!



SGRI Titan Moon T311 Balancer®

2/14/07 • Multi-Polled • Red

LBC Lman King Rob 8621
CPH Glacier Cheateau 744
CPH Glacier Rebala

KLBF King of the Hill 16H "Hank"
SGRI Patty 420P
DMF 1709H (Echo)

Check out the top in this calf. 16.6 adj. rib-eye, then look at the Genestars. Balancer at its best.

CE	BW	WW	YW	Milk	TM	GL	CED
103	-1.7	36	75	22	40	-1.1	106
SC	CW	REA	MB	DIF	CV	FM	
-0.1	6	0.09	0	0.8	7.39	14.96	
BW	Adj WW	Adj YW	SC				
83	634	1197	39.5				
ADG	WDA	REA	BF	% IMF			
3.58	3.16	16.6	.27	2.41			

QG1	QG2	QG3	QG4	QG GPD
★★	0	★★	★★	20.58
T1	T2	T3	T GPD	
★★	0	★	-1.1	
FE1	FE2	FE3	FE4	FE GPD
★★	★★	★★	★	-3.74



Lot 10



Lot 11



SGRI Polaris T312 ET Balancer®

2/14/07 • Multi-Polled • Red

GKT Bud 11G
JCGR Bar GT Louie 2J
WRGA 049C

CPH Glacier Cheateau 744
SGRI Splendor M211
SGRI K026 (Dak. Generator)

Full brother to Lot 8. Pick up both these full brothers and cover twice the cows with the same genetics. 75% GV, 25% AR

CE	BW	WW	YW	Milk	TM	GL	CED
101	1.5	55	103	20	48	-1.4	101
SC	CW	REA	MB	DIF	CV	FM	
0.3	11	0.21	-0.01	0.4	15.01	33.11	
BW	Adj WW	Adj YW	SC				
96	667	1280	38				
ADG	WDA	REA	BF	% IMF			
3.86	3.57	15.7	.18	1.69			

QG1	QG2	QG3	QG4	QG GPD
★★	0	★★	★	25.98
T1	T2	T3	T GPD	
★★	0	★	-1.1	
FE1	FE2	FE3	FE4	FE GPD
★★	★★	★★	★	-3.74



SGRI Taurus T313 Balancer®

2/14/07 • Scurs • Red

WF Beckton Julian GG B571
VC Buf Crk Romeo L081
VC Buf Crk Primrose 5679

JCGR Bar GT Louie 2J
SGRI Hickory R526
SGRI Hickory M229 (Hank)

Romeo/Louie/Hank doesn't get much better. Complete package bull that has everything the beef industry needs.

CE	BW	WW	YW	Milk	TM	GL	CED
104	0.3	50	90	21	46	-1.3	
SC	CW	REA	MB	DIF	CV	FM	
0.3	10	0.19	0.04	0.6	16.91	19.90	
BW	Adj WW	Adj YW	SC				
93	785	1372	40.5				
ADG	WDA	REA	BF	% IMF			
3.73	3.59	13.8	.18	2.36			

QG1	QG2	QG3	QG4	QG GPD
★	★	0	0	6.73
T1	T2	T3	T GPD	
★	★	★★	-1.5	
FE1	FE2	FE3	FE4	FE GPD
★	★★	★	★	-2.91

SCHROEDER RANCH WELCOMES YOU TO OUR 10TH ANNUAL BULL SALE

JOIN US FOR:

- ★ LUNCH AT NOON
- ★ BOVIGEN (GeneStar)
- GUEST SPEAKER
- LARRY GRAN AT 1 PM
- ★ SALE STARTS AT 2 PM

SCHROEDER RANCH BULLS – We measure it ~ You manage it!!



SGRI Solar Flare T315 ET Purebred 2/15/07 • Multi-Polled • Red

ELK Freightrain 836D
KLBF King of the Hill 16H "Hank"
 KLBF Gold Fund

SLC Freedom 178F ET
CTR Ruby Red 195L
 CTR Cedar Top's Banquet (Tom Horn)

Full brother to Lot 9. If you need to add frame to your cattle check out this bull sale day.

CE	BW	WW	YW	Milk	TM	GL	CED
99	3	46	83	13	36	-2.5	107
SC	CW	REA	MB	DtF	CV	FM	
0.1	8	0.05	-0.07	4.1	3.90	14.52	
BW	Adj WW	Adj YW	SC				
106	706	1376	42.5				
ADG	WDA	REA	BF	% IMF			
4.19	3.75	15.6	.16	1.61			
QG1	QG2	QG3	QG4	QG GPD			
0	0	0	★	5.0			
GeneSIS-R		T1	T2	T3	T GPD		
★★		0	★	-1.1			
FE1	FE2	FE3	FE4	FE GPD			
★★	★★	★★	0	-3.52			



SGRI Solar T320 Balancer® 2/17/07 • Scurs • Red

LBC Lman King Rob 8621
CPH Glacier Cheateau 744
 CPH Glacier Rebala

KLBF King of the Hill 16H "Hank"
SGRI Ms Tank 402P
 GWF Ms Tank 255P E352

Chateau/Hank out of Absolute Black's mother. This cow family has a lot of positive history in our herd. Find him sale day.

CE	BW	WW	YW	Milk	TM	GL	CED
105	-0.1	43	87	20	42	-1.1	107
SC	CW	REA	MB	DtF	CV	FM	
-0.2	6	0.09	0	0.8	7.97	24.06	
BW	Adj WW	Adj YW	SC				
95	687	1282	42				
ADG	WDA	REA	BF	% IMF			
3.78	3.41	14.6	.25	1.60			
QG1	QG2	QG3	QG4	QG GPD			
★	0	0	★	10.29			
GeneSIS-R		T1	T2	T3	T GPD		
★		0	★	-0.7			
FE1	FE2	FE3	FE4	FE GPD			
★★	★★	★★	★	-3.74			



SGRI Astro T317 Balancer® 2/16/07 • Multi-Polled • Black

Baldrige Kahuna 39K
River Hills Kahuna 175M
 Pleasanta of Conanga 736

JCGR Bar GT Louie 2J
SGRI Peaches R548
 SGRI 23K (Absolute Black)

Thick, moderate and loaded with Stars. This bull will move cattle in the right direction for carcass quality. Another strong cow family.

CE	BW	WW	YW	Milk	TM	GL	CED
103	-1.9	42	77	20	41	-0.9	102
SC	CW	REA	MB	DtF	CV	FM	
						10.64	
BW	Adj WW	Adj YW	SC				
85	668	1187	40				
ADG	WDA	REA	BF	% IMF			
3.30	3.08	14.1	.24	2.93			
QG1	QG2	QG3	QG4	QG GPD			
0	0	★★	★	15.4			
GeneSIS-R		T1	T2	T3	T GPD		
★★		★	★	-1.4			
FE1	FE2	FE3	FE4	FE GPD			
★★	★★	★★	★	-3.74			



Lot 15



Lot 16



SGRI Saturn T318 Balancer® 2/17/07 • Multi-Polled • Homozygous Black

B/R New Design 036
Bon View New Design 878
 Bon View Gammer 85

LWHF Santana ET
SGRI Kerry R557
 SGRI Kerry L120 (Ken)

Homozygous Black the only 878 calf in the sale and he is good. Gaining 4.23#/day and adj. rib and IMF ratio's of 113. Make sure you find him sale day.

CE	BW	WW	YW	Milk	TM	GL	CED
107	-0.6	42	88	22	43	-0.4	104
SC	CW	REA	MB	DtF	CV	FM	
0.5	10	0.1	0.19	9	30.14	26.79	
BW	Adj WW	Adj YW	SC				
88	681	1348	41				
ADG	WDA	REA	BF	% IMF			
4.23	3.51	16.4	.26	2.70			
QG1	QG2	QG3	QG4	QG GPD			
0	0	0	★	5.0			
GeneSIS-R		T1	T2	T3	T GPD		
★★		0	0	-0.7			
FE1	FE2	FE3	FE4	FE GPD			
★★	★	★	★	-2.57			

SCHROEDER RANCH BULLS – We measure it ~ You manage it!!



17

SGRI NASA T321 ET Purebred

2/17/07 • Multi-Polled • Black

XXB Titus 880K
XXB Big N' Rich 911P ET
EGL G565 (Beau Jangles)

JBOB Carolina Power
JNS Miss Carolina Power 25E
JNS Miss PM 19AET (P. Mignight)

Full brother to Lot 19. Royally bred Big N' Rich and Fearless's mother. 2 of the greats in Gelbvieh breed. Fearless sold for \$85,000 at the Sioux Empire Farm Show, Sioux Falls, SD.

CE	BW	WW	YW	Milk	TM	GL	CED
101	2.1	47	81	22	46	-1.2	103
SC	CW	REA	MB	DIF	CV	FM	
0.7							10.42
BW	Adj WW	Adj YW	SC				
104	690	1236	39				
ADG	WDA	REA	BF	% IMF			
3.41	3.37	13.0	.19	1.65			
QG1	QG2	GQ3	QG4	QG GPD			
0	★	0	★	6.44			
GeneSIS-R		T1	T2	T3	T GPD		
		★★	0	0	-0.7		
FE1	FE2	FE3	FE4	FE GPD			
★★	★	★★	★	-2.82			



Lot 17



Lot 18



18

SGRI North Star T322 Balancer®

2/18/07 • Multi-Polled • Homozygous Black

B/R New Design 036
Bon View New Design 1407
Bon View Pride 664

BTI Extra 2106K ET
SGRI Lacey R527
SGRI Lacey Nite G700 (Night Ryder)

Homozygous black, highest gaining, highest IMF%. This could be the best 1407 son in the sale. Make sure you study this bull sale day. Manager's Note: One of the truly complete bulls to be offered this spring — a must find!

CE	BW	WW	YW	Milk	TM	GL	CED
101	-1.2	40	91	22	42	-1.7	101
SC	CW	REA	MB	DIF	CV	FM	
0.4	9	-0.02	0.12	3.8	22.15	33.81	
BW	Adj WW	Adj YW	SC				
94	613	1294	36.5				
ADG	WDA	REA	BF	% IMF			
4.31	3.37	13.9	.35	4.03			
QG1	QG2	GQ3	QG4	QG GPD			
0	0	0	★	5.0			
GeneSIS-R		T1	T2	T3	T GPD		
		★★	0	0	-0.7		
FE1	FE2	FE3	FE4	FE GPD			
★★	★★	★★	0	-3.52			



Lot 19



19

SGRI Sattelite T324 ET Purebred

2/19/07 • Multi-Polled • Black

XXB Titus 880K
XXB Big N' Rich 911P ET
EGL G565 (Beau Jangles)

JBOB Carolina Power
JNS Miss Carolina Power 25E
JNS Miss PM 19AET (P. Midnight)

Full brother to Lot 17. Don't miss the opportunity to put 2 full brothers together in the same pasture for a consistent, sale-topping calf crop.

CE	BW	WW	YW	Milk	TM	GL	CED
101	2.1	47	81	22	46	-1.2	103
SC	CW	REA	MB	DIF	CV	FM	
0.7							10.42
BW	Adj WW	Adj YW	SC				
94	643	1199	40				
ADG	WDA	REA	BF	% IMF			
3.48	3.27	14.1	.22	2.28			
QG1	QG2	GQ3	QG4	QG GPD			
0	★	0	★	6.44			
GeneSIS-R		T1	T2	T3	T GPD		
		★★	0	0	-0.7		
FE1	FE2	FE3	FE4	FE GPD			
★★	★★	★★	0	-3.52			

SCHROEDER RANCH BULLS – We measure it ~ You manage it!!



SGRI Northern Lights T326 Purebred

3/2/07 • Scurs • Red

GKT Bud 11G
JCGR Bar GT Louie 2J
 WRGA 049C

KLBF King of the Hill 16H "Hank"
SGRI Hilda L149
 CDA 621F (ARN MM Super G)

This is a full brother to the Shareholder bull, Jumping Cow Gelbvieh bought 2 years ago. Big topped, big gain, make sure you find him. The Louie/Hank combination has unmatched consistency for carcass DNA profiles.

CE	BW	WW	YW	Milk	TM	GL	CED
103	1.4	44	79	17	39	-2.3	107
SC	CW	REA	MB	DtF	CV	FM	
0.6	14	0.19	-0.01	1.7	16.70	11.13	
BW	Adj WW	Adj YW	SC				
102	671	1331	37.5				
ADG	WDA	REA	BF	% IMF			
4.13	3.65	16.0	.27	1.48			
QG1	QG2	QG3	QG4	QG GPD			
★	0	★	★★	20.49			
GeneStar		T1	T2	T3	T GPD		
★★		★	★	★	-1.4		
FE1	FE2	FE3	FE4	FE GPD			
★	★★	★★	0	-2.93			



SGRI Triton T329 Purebred

3/7/07 • Scurs • Red

GKT Bud 11G
JCGR Bar GT Louie 2J
 WRGA 049C

MTG Mr T 22C
SGRI Terrace J965
 CDG 054Z (NKP 152T)

This bull's grandmother 054Z was our 1st donor cow and she has left quite an impact. Louie/Mr. T only makes it better.

CE	BW	WW	YW	Milk	TM	GL	CED
101	2.3	42	66	22	43	-1.7	98
SC	CW	REA	MB	DtF	CV	FM	
0.5	11	0.16	-0.02	0	10.84	-4.93	
BW	Adj WW	Adj YW	SC				
102	654	1204	36				
ADG	WDA	REA	BF	% IMF			
3.44	3.31	15.4	.18	1.46			
QG1	QG2	QG3	QG4	QG GPD			
0	0	0	0	0			
GeneStar		T1	T2	T3	T GPD		
★★		★	★	★★	-1.5		
FE1	FE2	FE3	FE4	FE GPD			
0	★★	★★	0	-2.33			



SGRI Mariner T327 Purebred

3/5/07 • Double Polled • Red

GKT Bud 11G
JCGR Bar GT Louie 2J
 WRGA 049C

KLBF King of the Hill 16H "Hank"
SGRI Heritage M256
 CDA 621F (ARN MM Super G)

Deep, soggy, Louie/Hank this combination always works. Check out his Genestars. Full brother in blood to Lot 20.

CE	BW	WW	YW	Milk	TM	GL	CED
100	2.6	51	83	15	41	-3.1	104
SC	CW	REA	MB	DtF	CV	FM	
0.6	12	0.17	-0.01	0.9	13.94	8.52	
BW	Adj WW	Adj YW	SC				
104	693	1219	35				
ADG	WDA	REA	BF	% IMF			
3.29	3.34	14.3	.16	1.20			
QG1	QG2	QG3	QG4	QG GPD			
★	0	★	★★	20.49			
GeneStar		T1	T2	T3	T GPD		
★★		★	★	★	-1.4		
FE1	FE2	FE3	FE4	FE GPD			
★★	★★	★	★	-3.5			



Lot 22



SGRI Jupiter T330 Purebred

3/7/07 • Multi-Polled • Black

RTC Atlas 712G
SGRI P107
 SGRI Amaryllis M239 (Amadeus)

SPUR Beretta 703G
SGRI Ms Helen R535
 MCFG 12K ET (Echo)

Wow!! 18.6 adj. rib. If you need to add rib-eye size find this bull.

CE	BW	WW	YW	Milk	TM	GL	CED
100	1.9	46	77	20	43	-2.6	102
SC	CW	REA	MB	DtF	CV	FM	
0.3	7	0.08	-0.11	1.7	-1.33	5.88	
BW	Adj WW	Adj YW	SC				
95	762	1428	39				
ADG	WDA	REA	BF	% IMF			
4.16	3.70	18.6	.23	1.95			
QG1	QG2	QG3	QG4	QG GPD			
0	★★	0	★	7.88			
GeneStar		T1	T2	T3	T GPD		
★		0	0	0	-0.3		
FE1	FE2	FE3	FE4	FE GPD			
★★	★	★	0	-2.35			



SGRI Orbit T331 Purebred

3/7/07 • Multi-Polled • Red

GKT Bud 11G
JCGR Bar GT Louie 2J
 WRGA 049C

SPUR Beretta 703G
SGRI Buffaloberry P450
 JDA Buffaloberry (ARN MM Super G)

Well balanced bull that will produce both feeder cattle and replacement females. Make sure you study this bull.

CE	BW	WW	YW	Milk	TM	GL	CED
106	0.5	37	72	17	36	-2.9	105
SC	CW	REA	MB	DtF	CV	FM	
0.6	15	0.23	-0.1	0.7	10.16	9.42	
BW	Adj WW	Adj YW	SC				
92	630	1276	42				
ADG	WDA	REA	BF	% IMF			
4.04	3.39	14.1	.16	1.40			
QG1	QG2	QG3	QG4	QG GPD			
0	★	0	0	1.44			
GeneStar		T1	T2	T3	T GPD		
★★		★	★	★	-1.4		
FE1	FE2	FE3	FE4	FE GPD			
★	★★	★★	0	-2.93			

SCHROEDER RANCH BULLS - We measure it ~ You manage it!!



25

SGRI Hidalgo T334 88%

3/12/07 • Multi-Polled • Red

GKT Bud 11G
JCGR Bar GT Louie 2J
WRGA 049C

JOB Danell Black Condor 6L
SGRI Scandal P420
SGRI Scandal M202 (Gl. Chateau)

Feed efficient. Gain 4.16#/day with 7 stars for feed efficiency. This bull will be diluter free to produce black or red calves on black cows.

CE	BW	WW	YW	Milk	TM	GL	CED
103	1.6	49	90	19	44	-1.9	103
SC	CW	REA	MB	DtF	CV	FM	
0.4	10	0.18	0	1.9	13.66	21.12	
BW	Adj WW	Adj YW	SC				
102	709	1373	42				
ADG	WDA	REA	BF	% IMF			
4.16	3.72	15.3	.21	1.55			
QG1	QG2	GQ3	QG4	QG GPD			
★	0	★	★	15.49			
GeneSis-R		T1	T2	T3	T GPD		
★★		0	0	0	-0.7		
FE1	FE2	FE3	FE4	FE GPD			
★★	★★	★★	★	-3.74			



Lot 25



26

SGRI Adonis T333 Purebred

3/11/07 • Multi-Polled • Black

XXB Titus 880K
XXB Big N' Rich 911P ET
EGL G565 (Beau Jangles)

KIDS Mr Ken (Ellison)
SGRI Lavina N365
SGRI Lavina H828

Free moving and thick. This calf should be a stand out sale day. Recall that Big N' Rich was the 2006 Breeder's Choice Bull Futurity Champion and the Reserve National Champion bull!

CE	BW	WW	YW	Milk	TM	GL	CED
105	1.2	38	70	18	37	-1.7	105
SC	CW	REA	MB	DtF	CV	FM	
0.6						5.37	
BW	Adj WW	Adj YW	SC				
95	645	1261	37				
ADG	WDA	REA	BF	% IMF			
3.85	3.43	14.5	.28	1.74			
QG1	QG2	GQ3	QG4	QG GPD			
★	★	0	★★	16.73			
GeneSis-R		T1	T2	T3	T GPD		
★★		0	★	★	-1.1		
FE1	FE2	FE3	FE4	FE GPD			
★	★	★★	★	-2.22			



27

SGRI Lunar T338 Purebred

3/14/07 • Double Polled • Black

XXB Titus 880K
XXB Big N' Rich 911P ET
EGL G565 (Beau Jangles)

KIDS Mr Ken (Ellison)
SGRI Kylie J936
SGRI Blk Star F655

Big N' Rich is really stamping his calves and this bull is no exception. Big topped easy moving. Find this bull sale day. You won't be disappointed.

CE	BW	WW	YW	Milk	TM	GL	CED
105	1.9	41	70	19	40	-0.4	105
SC	CW	REA	MB	DtF	CV	FM	
0.4						1.84	
BW	Adj WW	Adj YW	SC				
104	670	1260	38.5				
ADG	WDA	REA	BF	% IMF			
3.69	3.48	14.4	.26	2.58			
QG1	QG2	GQ3	QG4	QG GPD			
0	★	0	★	6.44			
GeneSis-R		T1	T2	T3	T GPD		
★★		0	★	★	-1.1		
FE1	FE2	FE3	FE4	FE GPD			
★	0	★★	★	-1.3			



28

SGRI Krator T341 Purebred

3/15/07 • Scurs • Red

XXB Titus 880K
XXB Big N' Rich 911P ET
EGL G565 (Beau Jangles)

KLBF King of the Hill 16H "Hank"
SGRI Hickory M229
CDA 220B

This guy is a meat wagon. Big N' Rich on Hank daughters, this bull should produce some excellent females. All 3 heifers out of M229 have been kept as replacements.

CE	BW	WW	YW	Milk	TM	GL	CED
105	2	53	88	23	50	-1.5	108
SC	CW	REA	MB	DtF	CV	FM	
0.5						13.34	
BW	Adj WW	Adj YW	SC				
94	775	1401	41				
ADG	WDA	REA	BF	% IMF			
3.91	3.85	13.8	.31	2.72			
QG1	QG2	GQ3	QG4	QG GPD			
0	★	0	★★	11.44			
GeneSis-R		T1	T2	T3	T GPD		
★★		0	0	0	-0.7		
FE1	FE2	FE3	FE4	FE GPD			
★★	★★	★★	0	-3.52			



Lot 28

SCHROEDER RANCH BULLS - We measure it ~ You manage it!!



SGRI Nebula T345 Purebred

3/16/07 • Multi-Polled • Red

XXB Titus 880K
XXB Big N' Rich 911P ET
EGL G565 (Beau Jangles)

KIDS Mr Ken
SGRI Kay L122
SGRI Calyspo H893

Another red Big N' Rich bull that is big topped and loads of volume. Find this Big N' Rich calf sale day. Big N' Rich sired this years Breeder's Choice Bull Futurity Champion in Denver!

CE	BW	WW	YW	Milk	TM	GL	CED
102	2.1	43	68	19	41	-0.8	102
SC	CW	REA	MB	DtF	CV	FM	
0.4							-3.30
BW	Adj WW	Adj YW	SC				
106	691	1251	39				
ADG	WDA	REA	BF	% IMF			
3.50	3.45	14.6	.31	2.07			
QG1	QG2	GQ3	QG4	QG GPD			
0	0	0	★	5.0			
	T1	T2	T3	T GPD			
GeneSis-R	★★	0	0	-0.7			
FE1	FE2	FE3	FE4	FE GPD			
★★	★	★★	0	-2.6			



Lot 29



Lot 30



SGRI Eclipse T346 Purebred

3/16/07 • Double Polled • Red

ELK Freightrain 836D
KLBF King of the Hill 16H "Hank"
KLBF Gold Fund

VRT Lazy TV Amadeus K298
SGRI Amy N356
ECC 696B

Style and balance makes this bull a stand out in the pen. Make sure you check out this Hank son. There are only a few in this years offering.

CE	BW	WW	YW	Milk	TM	GL	CED
102	3.1	54	85	16	43	-1.7	108
SC	CW	REA	MB	DtF	CV	FM	
0.1	10	0.07	-0.05	2.3	7.37	7.82	
BW	Adj WW	Adj YW	SC				
104	765	1353	39				
ADG	WDA	REA	BF	% IMF			
3.68	3.68	15.6	.22	1.56			
QG1	QG2	GQ3	QG4	QG GPD			
0	★	0	★★	6.44			
	T1	T2	T3	T GPD			
GeneSis-R	★★	0	★	-1.1			
FE1	FE2	FE3	FE4	FE GPD			
★★	★★	★★	0	-3.52			



SGRI Sirius T347 Purebred

3/16/07 • Multi-Polled • Black

XXB Titus 880K
XXB Big N' Rich 911P ET
EGL G565 (Beau Jangles)

VRT Lazy TV Amadeus K298
SGRI Miss Amadeus P469
SGRI H845

Another calf off an Amadeus daughter only Big N' Rich this time. With a 135 IMF ratio he's at the top of this years offering.

CE	BW	WW	YW	Milk	TM	GL	CED
103	2.2	48	80	22	46	-1.5	101
SC	CW	REA	MB	DtF	CV	FM	
0.5							7.79
BW	Adj WW	Adj YW	SC				
106	696	1250	40.5				
ADG	WDA	REA	BF	% IMF			
3.46	3.33	14.5	.30	2.80			
QG1	QG2	GQ3	QG4	QG GPD			
0	0	0	★	5.0			
	T1	T2	T3	T GPD			
GeneSis-R	★	0	0	-0.3			
FE1	FE2	FE3	FE4	FE GPD			
★★	★	★★	★	-2.82			



SGRI Rocket T348 Balancer®

3/19/07 • Scurs • Red

BCRR BCRR Gemstone 346
BCJS Sanderson Rocket 36R
BCJS Sanderson Justine

KIT Tabasco J26 ET
SGRI Shannon R512
SGRI M32 (Hank)

This balancer calf out of a 1st calf heifer combines it all. Check out his numbers and you will agree.

CE	BW	WW	YW	Milk	TM	GL	CED
	1.2	45	79	19	42	-0.7	
SC	CW	REA	MB	DtF	CV	FM	
							9.93
BW	Adj WW	Adj YW	SC				
93	744	1351	40.5				
ADG	WDA	REA	BF	% IMF			
3.85	3.61	16.4	.25	2.27			
QG1	QG2	GQ3	QG4	QG GPD			
★	0	0	★	10.29			
	T1	T2	T3	T GPD			
GeneSis-R	★★	★	★	-1.4			
FE1	FE2	FE3	FE4	FE GPD			
★★	★	★★	★	-2.82			

SCHROEDER RANCH BULLS – We measure it ~ You manage it!!



SGRI Star Fire T349 Purebred 3/19/07 • Multi-Polled • Black

XXB Titus 880K
XXB Big N' Rich 911P ET
EGL G565

SPUR Beretta 703G
SGRI Alesa P411
SGRI Alesa L126 (Absolute Black)

Black Big N' Rich son with a 132 IMF ratio and a 15.7 inch ribeye. Don't miss him. After this summer's AI breeding season, Big N' Rich semen will not be available for three years!!

CE	BW	WW	YW	Milk	TM	GL	CED
101	3.1	47	78	20	44	-2	104
SC	CW	REA	MB	DtF	CV	FM	
0.5							6.12
BW	Adj WW	Adj YW	SC				
102	711	1349	42.5				
ADG	WDA	REA	BF	% IMF			
3.99	3.63	15.7	.29	2.74			
QG1	QG2	GQ3	QG4	QG GPD			
0	★	0	★	6.44			
GeneST:SR		T1	T2	T3	T GPD		
★★		0	0	-0.7			
FE1	FE2	FE3	FE4	FE GPD			
★	★★	★	★	-2.91			



Lot 33



SGRI Halo T350 Purebred 3/19/07 • Multi-Polled • Black

XXB Titus 880K
XXB Big N' Rich 911P ET
EGL G565 (Beau Jangles)

LWHF Santana ET
SGRI Sue P423
SGRI L118 (Hank)

7 Star feed efficiency with \$5.00 corn this calf should help reduce feed costs in his calves.

CE	BW	WW	YW	Milk	TM	GL	CED
109	0.1	46	78	18	41	-1.1	107
SC	CW	REA	MB	DtF	CV	FM	
0.4							7.31
BW	Adj WW	Adj YW	SC				
85	689	1245	37.5				
ADG	WDA	REA	BF	% IMF			
3.48	3.33	14.5	.34	3.71			
QG1	QG2	GQ3	QG4	QG GPD			
0	★	0	★	6.44			
GeneST:SR		T1	T2	T3	T GPD		
★★		0	0	-0.7			
FE1	FE2	FE3	FE4	FE GPD			
★★	★★	★★	★	-3.74			

**UNABLE TO ATTEND
THE SALE?
CALL JERRY METTLER
METTLER SALE MANAGEMENT
FOR PROFESSIONAL/CONFIDENTIAL
BUYING ASSISTANCE
PRIOR TO SALE DAY:
605/987-2114
SALE DAY:
605/321-9848 OR 605/366-4192**



SGRI Leo T351 7/8 GV 3/19/07 • Multi-Polled • Homozygous Black

XXB Titus 880K
XXB Big N' Rich 911P ET
EGL G565 (Beau Jangles)

LWHF Absolute Black 352H
SGRI Vegas N377
GDJ 110A (Angus)

Homozygous Black and good. Big N' Rich works again on Absolute Black daughter. Big N' Rich produced the 2008 Futurity champion and people around the country are talking about the calves.

CE	BW	WW	YW	Milk	TM	GL	CED
104	1.9	43	73	17	39	-1	107
SC	CW	REA	MB	DtF	CV	FM	
0.5							3.73
BW	Adj WW	Adj YW	SC				
100	662	1236	40				
ADG	WDA	REA	BF	% IMF			
3.60	3.41	13.7	.20	2.67			
QG1	QG2	GQ3	QG4	QG GPD			
0	0	0	★★	10.0			
GeneST:SR		T1	T2	T3	T GPD		
★★		★	★	-1.4			
FE1	FE2	FE3	FE4	FE GPD			
★	★	★★	0	-2			



Lot 35

SCHROEDER RANCH BULLS – We measure it ~ You manage it!!



36

SGRI Explorer T352 Purebred

3/20/07 • Multi-Polled • Red

GKT Bud 11G
JCGR Bar GT Louie 2J
WRGA 049C

KLBF King of the Hill 16H "Hank"
SGRI Effie P421
SGRI Effie L101 (New Era)

Another calf in the Louie/Hank mold. This mating always seems to work.

CE	BW	WW	YW	Milk	TM	GL	CED
105	0.8	45	77	17	40	-2.6	105
SC	CW	REA	MB	DtF	CV	FM	
0.4	13	0.17	-0.04	2.3	12.57	7.06	
BW	Adj WW	Adj YW	SC				
92	672	1236	38				
ADG	WDA	REA	BF	% IMF			
3.53	3.31	14.8	.15	1.62			
QG1	QG2	QG3	QG4	QG GPD			
0	0	★	★	10.19			
GeneSis-R		T1	T2	T3	T GPD		
★★		0	★	-1.1			
FE1	FE2	FE3	FE4	FE GPD			
★★	★★	★★	0	-3.52			



Lot 36



Lot 37



37

SGRI Supernova T353 Purebred

3/20/07 • Multi-Polled • Black

XXB Titus 880K
XXB Big N' Rich 911P ET
EGL G565

JCGR Bar GT Louie 2J
SGRI Hope N313
SGRI Hope L155 (Hank)

Big N' Rich/Louie/Hank what more can a person say. This bull combines the best of these 3 Schroeder Ranch herdsires.

CE	BW	WW	YW	Milk	TM	GL	CED
102	2.5	50	84	19	44	-1.7	104
SC	CW	REA	MB	DtF	CV	FM	
0.5						11.15	
BW	Adj WW	Adj YW	SC				
102	711	1321	40				
ADG	WDA	REA	BF	% IMF			
3.81	3.61	16.5	.21	1.45			
QG1	QG2	QG3	QG4	QG GPD			
0	★	0	★	6.44			
GeneSis-R		T1	T2	T3	T GPD		
★★		0	0	-0.7			
FE1	FE2	FE3	FE4	FE GPD			
★	0	★★	★	-1.3			



38

SGRI Neptune T355 Purebred

3/22/07 • Multi-Polled • Homozygous Black

XXB Titus 880K
XXB Big N' Rich 911P ET
EGL G565

LWHF Absolute Black 352H
SGRI M20
JCB 895H (Black Opal)

Homozygous Black Big N' Rich with a 146 IMF ratio. Put him on some black cows to produce those balancer calves that the feedlots are looking for.

CE	BW	WW	YW	Milk	TM	GL	CED
109	-0.3	37	66	17	36	-2.3	108
SC	CW	REA	MB	DtF	CV	FM	
0.6						.88	
BW	Adj WW	Adj YW	SC				
90	660	1220	38.5				
ADG	WDA	REA	BF	% IMF			
3.50	3.35	14.1	.27	3.01			
QG1	QG2	QG3	QG4	QG GPD			
0	★	0	★★	11.44			
GeneSis-R		T1	T2	T3	T GPD		
★★		0	★	-1.1			
FE1	FE2	FE3	FE4	FE GPD			
★★	★★	★	0	-3.28			



39

SGRI Gemini T357 Purebred

3/22/07 • Multi-Polled • Red

XXB Titus 880K
XXB Big N' Rich 911P ET
EGL G565

VRT Lazy TV Amadeus K298
SGRI Kami N384
SGRI Kami K011 (Better Deal)

Gain 4.20#/day this calf will work in any one's operation. Big N' Rich sure is working well for us!

18 INCH RIBEYE!

CE	BW	WW	YW	Milk	TM	GL	CED
105	1.3	46	81	19	42	-1.5	102
SC	CW	REA	MB	DtF	CV	FM	
0.6						11.62	
BW	Adj WW	Adj YW	SC				
93	617	1289	39.5				
ADG	WDA	REA	BF	% IMF			
4.20	3.54	18.0	.18	2.01			
QG1	QG2	QG3	QG4	QG GPD			
0	0	0	★★	10.0			
GeneSis-R		T1	T2	T3	T GPD		
★★		0	0	-0.7			
FE1	FE2	FE3	FE4	FE GPD			
★★	★	★	★	-2.57			



Lot 39

SCHROEDER RANCH BULLS - We measure it ~ You manage it!!



SGRI Voyager T361 ^{7/8} GV

3/24/07 • Multi-Polled • Homozygous Black

XXB Titus 880K
XXB Big N' Rich 911P ET
 EGL G565

DDF Otis ET (Sherman Tank)
GDJ 600F
 GDJ 2000 (Angus)

Homozygous Black Big N' Rich with 7 star feed efficiency. Find him sale day.

CE	BW	WW	YW	Milk	TM	GL	CED
102	2.2	39	72	20	40	-1.2	103
SC	CW	REA	MB	DtF	CV	FM	
0.5							7.04
BW	Adj WW	Adj YW	SC				
96	647	1189	37.5				
ADG	WDA	REA	BF	% IMF			
3.40	3.30	14.5	.16	1.47			
QG1	QG2	QG3	QG4	QG GPD			
0	★	0	★★	11.44			
GeneSis-R		T1	T2	T3	T GPD		
		★★	★	0	-1.0		
FE1	FE2	FE3	FE4	FE GPD			
★★	★	★★	★★	-3.04			



SGRI Astronomy T362 Purebred

3/24/07 • Double Polled • Red

XXB Titus 880K
XXB Big N' Rich 911P ET
 EGL G565

LWHF Absolute Black 352H
SGRI K071
 GDJ 606F

Diluter free, 16 inch ribeye; 7 star feed efficiency. Use him with confidence on both red and black cows to make those feeder calves the market is looking for.

CE	BW	WW	YW	Milk	TM	GL	CED
108	1.3	48	76	18	42	-1.2	107
SC	CW	REA	MB	DtF	CV	FM	
0.5							2.10
BW	Adj WW	Adj YW	SC				
94	711	1227	40				
ADG	WDA	REA	BF	% IMF			
3.23	3.39	16.0	.23	2.74			
QG1	QG2	QG3	QG4	QG GPD			
0	★	0	★★	11.44			
GeneSis-R		T1	T2	T3	T GPD		
		★★	0	0	-0.7		
FE1	FE2	FE3	FE4	FE GPD			
★★	★★	★★	★	-3.74			



Lot 42



SGRI Corona T364 Purebred

3/26/07 • Multi-Polled • Black

XXB Titus 880K
XXB Big N' Rich 911P ET
 EGL G565

KLBF King of the Hill 16H "Hank"
SGRI 38N
 DMF 1712H (JBOB 254D)

Deep and thick with maternal built in. 38N balancer bull last year sold to Jon Beastron for \$4,900. A must find sale day.

CE	BW	WW	YW	Milk	TM	GL	CED
106	0.9	42	71	21	42	-1.7	107
SC	CW	REA	MB	DtF	CV	FM	
0.4							2.08
BW	Adj WW	Adj YW	SC				
89	682	1220	37				
ADG	WDA	REA	BF	% IMF			
3.36	3.30	15.4	.25	1.89			
QG1	QG2	QG3	QG4	QG GPD			
★	0	0	★★	15.29			
GeneSis-R		T1	T2	T3	T GPD		
		★★	0	0	-0.7		
FE1	FE2	FE3	FE4	FE GPD			
★★	★	★★	★	-2.82			



SGRI Explorer T371 Purebred

3/28/07 • Scurs • Red

XXB Titus 880K
XXB Big N' Rich 911P ET
 EGL G565

KLBF King of the Hill 16H "Hank"
SGRI Della N336
 SGRI Della H800 (Better Deal)

This is rare: 8 Stars feed efficiency. 4.09#/day, 16.2 adj. rib, 137 IMF ratio. This bull deserves a good hard look. You don't find them much better than this. Homozygous for DNA tested Feed Efficiency!!!

CE	BW	WW	YW	Milk	TM	GL	CED
101	3.1	54	93	18	45	-1.7	107
SC	CW	REA	MB	DtF	CV	FM	
0.4							19.43
BW	Adj WW	Adj YW	SC				
104	724	1378	40.5				
ADG	WDA	REA	BF	% IMF			
4.09	3.79	16.2	.26	2.84			
QG1	QG2	QG3	QG4	QG GPD			
★	0	0	★★	15.29			
GeneSis-R		T1	T2	T3	T GPD		
		★★	0	0	-0.7		
FE1	FE2	FE3	FE4	FE GPD			
★★	★★	★★	★★	-3.96			



SGRI Orion T372 Purebred

3/30/07 • Multi-Polled • Red

GKT Bud 11G
JCGR Bar GT Louie 2J
 WRGA 049C

JRI Pld Free Agent 125J3
SGRI Hickory P408
 SGRI Hickory M229 (Hank)

Yet another calf going back to the M229 cow. Her genetics are represent in Lots 44, 12, 28. Now thats cow power.

CE	BW	WW	YW	Milk	TM	GL	CED
108	-0.7	43	78	17	39	-3.3	106
SC	CW	REA	MB	DtF	CV	FM	
0.6	8	0.08	-0.07	2.1	3.77	10.88	
BW	Adj WW	Adj YW	SC				
86	694	1232	38				
ADG	WDA	REA	BF	% IMF			
3.36	3.31	14.9	.24	1.69			
QG1	QG2	QG3	QG4	QG GPD			
0	0	0	★	5.0			
GeneSis-R		T1	T2	T3	T GPD		
		★	0	★	-0.7		
FE1	FE2	FE3	FE4	FE GPD			
★	★★	★★	0	-2.93			

SCHROEDER RANCH BULLS – We measure it ~ You manage it!!



45

SGRI Asteriod T378 Purebred

4/3/07 • Multi-Polled • Black

XXB Titus 880K
XXB Big N' Rich 911P ET
EGL G565

KLBF King of the Hill 16H "Hank"
SGRI Helena M251
GDJ 402D (Pacific Prospector)

Pedigree speaks for this calf with this combination, you can't go wrong.

CE	BW	WW	YW	Milk	TM	GL	CED
103	2.5	51	82	19	45	-1.5	106
SC	CW	REA	MB	DtF	CV	FM	
0.3							7.09
BW	Adj WW	Adj YW	SC				
102	758	1352	39				
ADG	WDA	REA	BF	% IMF			
3.73	3.76	16.3	.19	1.90			
QG1	QG2	QG3	QG4	QG GPD			
0	0	0	★	5.0			
GeneSis-R		T1	T2	T3	T GPD		
★		★	0	0	-0.3		
FE1	FE2	FE3	FE4	FE GPD			
★★	★	★	★	-2.57			



46

SGRI Solar Wind T381 Purebred

4/4/07 • Multi-Polled • Black

GKT Bud 11G
JCGR Bar GT Louie 2J
WRGA 049C

TLR Cocoa 35C
RRTO Cocoa Puff
RJRR 727C

*The only black Louie son in the offering.
Moderate frame big ribbed, heavy quartered.*

CE	BW	WW	YW	Milk	TM	GL	CED
101	1.2	43	82	16	38	-1.9	104
SC	CW	REA	MB	DtF	CV	FM	
0.4	12	0.18	0.02	2.7	17.56	16.69	
BW	Adj WW	Adj YW	SC				
96	631	1315	37				
ADG	WDA	REA	BF	% IMF			
4.28	3.69	16.6	.20	1.71			
QG1	QG2	QG3	QG4	QG GPD			
0	0	0	★	5.0			
GeneSis-R		T1	T2	T3	T GPD		
★		★	★	★	-1.1		
FE1	FE2	FE3	FE4	FE GPD			
★★	★★	★★	0	-3.52			



47

SGRI Challenger T394 Balancer®

4/14/07 • Multi-Polled • Black

XXB Titus 880K
XXB Big N' Rich 911P ET
EGL G565

CPH Glacier Chateau 744
SGRI Scandal M202
SGRI K089

Deep, soggy, and correct. This 3/4 Gelbvieh has a 17.5 ribeye in a moderate package. M202 is also the grandmother to Lot 25. This is one of Dustin's favorites and with good reason. Find him sale day. 75% GV 25% AR

CE	BW	WW	YW	Milk	TM	GL	CED
104	1.4	51	91	24	50	-0.3	103
SC	CW	REA	MB	DtF	CV	FM	
0.4							20.15
BW	Adj WW	Adj YW	SC				
102	748	1337	39				
ADG	WDA	REA	BF	% IMF			
3.71	3.81	17.5	.23	2.66			
QG1	QG2	QG3	QG4	QG GPD			
0	0	0	★★	10.0			
GeneSis-R		T1	T2	T3	T GPD		
★★		★★	0	★	-1.1		
FE1	FE2	FE3	FE4	FE GPD			
★★	★	★	★	-2.57			



Lot 47



48

SGRI Vega T385 Purebred

4/6/07 • Multi-Polled • Red

SPUR Beretta 703G
SGRI P156
SGRI Kaiten K007 (Better Deal)

KLBF King of the Hill 16H "Hank"
SGRI Buffaloberry N323
JDA Buffaloberry (ARN MM Super G)

Red and good. Hank's influence shows up again and again.

CE	BW	WW	YW	Milk	TM	GL	CED
100	3.5	55	94	16	44	-2.5	105
SC	CW	REA	MB	DtF	CV	FM	
0.5	9	0.09	-0.11	0.3	2.09	19.68	
BW	Adj WW	Adj YW	SC				
104	739	1367	37.5				
ADG	WDA	REA	BF	% IMF			
3.93	3.78	15.6	.19	1.71			
QG1	QG2	QG3	QG4	QG GPD			
0	★	0	★	6.44			
GeneSis-R		T1	T2	T3	T GPD		
★★		★★	0	0	-0.7		
FE1	FE2	FE3	FE4	FE GPD			
★★	★★	★★	0	-3.52			



49

SGRI Endeavour T398 Purebred

4/17/07 • Multi-Polled • Black

VRT Lazy TV Cocoa J265
BEA Black Perfection
BEA 833H

LWHF Absolute Black 352H
SGRI Kendra K105
GDJ 500E (Otis)

Youngest calf in the sale and biggest top calf in the sale with and 18.6 adj. ribeye. In a moderate package this bull could be the buy of the sale.

CE	BW	WW	YW	Milk	TM	GL	CED
102	2.2	39	76	19	39	-1.1	105
SC	CW	REA	MB	DtF	CV	FM	
0.4	3	0.03	0.07	4.6	8.33	12.80	
BW	Adj WW	Adj YW	SC				
102	686	1302	40.5				
ADG	WDA	REA	BF	% IMF			
3.85	3.67	18.6	.24	2.10			
QG1	QG2	QG3	QG4	QG GPD			
0	0	★	★	10.19			
GeneSis-R		T1	T2	T3	T GPD		
★★		★★	0	★	-1.1		
FE1	FE2	FE3	FE4	FE GPD			
★	★★	★★	0	-2.93			

ULTRASOUND BULL OFFERING AVERAGES: REA 15.1 ★ BF .24" ★ % IMF 2.08

LOTS 50-69 SCHROEDER RANCH COMMERCIAL OPEN HEIFERS

★ **Quality Replacement Females**

★ **Selling Only Our Best 20 Crossbred Heifers**

Lots 50-54 Five Black Heifers

Lots 60-64 Five Red Heifers

Lots 55-59 Five Red Heifers

Lots 65-69 Five Red Heifers



Commercial Heifers



Lot #1; Lot #27



Our Iowa Beef Expo Bull



Makin' Friends



Feedin' Time



Careful!!



Docile Bulls



Dustin — Scratchin'

Stan's Inc.

1-888-849-3582

Alpena, SD

*We would like to thank
Schroeder Ranch for the
opportunity to build a feeding
program that compliments their
line of bull genetics.*

Stan's is an Ag-Related Business

Dedicated to

Serving You for over 40 Years.

**We Specialize in Hubbard Feed
Supplements & Trucking.**

We can customize a ration to fit your needs. Our automated feed mill in Alpena enables Stan's to manufacture all of your feed needs from Protein Supplements to Show Feeds to Co-Balancers.

We have Hubbard specialists available: Dr. Dan Herold, PhD is our beef nutritionist.

For all your product/service information, contact one of our feed specialists today:

Jim Troth . . . Alpena . . . 605-350-7001

Bill Salter . . . Alpena . . . 605-350-7783

Sandy Naber . . . Miller . . . 605-350-7012

Don Beckler . . . Harrold . . . 605-875-3278

Troy Grandpre . . . Turton . . . 605-897-6575

Lawrence Weidenbach . . . Highmore
605-852-2264 . . . 605-870-1077

Understanding DNA Technology:

The GeneSTAR[®] line of genomic products was the first DNA diagnostic tools available anywhere in the world for testing of beef cattle. Bovigen would like to thank Foos Angus for their recognition of the value of DNA technology and for their efforts in promoting and improving the understanding of this exciting technology.

Why DNA testing? DNA testing provides a fast, economical and accurate means of identifying the genetic potential of an animal. Instead of waiting until the animal is old enough to be tested for the trait in question or using statistical methodologies to estimate what genetics an animal carries, DNA testing allows you to take a sample of the animal and test to see what genetics are in that animal at any age. Further, we know that the DNA will be same regardless of how the animal was managed.

Interpreting DNA results. The results of DNA tests are expressed in two ways.

STARS - The first is the number of Stars by marker and by trait. Every DNA marker refers to two spots on the DNA helix. At these two spots, an animal carries either the positive form of the marker or the negative form of the marker. Therefore, for each marker we total the number of positive forms or alleles. Therefore an animal will be reported to have 0, 1 or 2 forms of the positive allele. This is represented as 0, 1 or 2 STARS. So for each marker an animal is a 0, 1 or 2 STAR. If there are four markers for a trait such as with Feed Efficiency or Quality Grade, then the animal can be up to an 8 STARS for that trait.

GPD[®] - The second way that marker results are reported is as GPD[®] or Genetic Progeny Difference[®]. Through the evaluation and research on the markers, it is known that individual markers and combinations of markers have a certain affect on that trait. So by applying this knowledge to the specific marker or STAR results, it is possible to show than an animals genetics has a certain affect on that trait. For instance, an 8 STAR animal for Feed Efficiency will have a GPD[®] of -3.96. That means that this animal will eat 3.96 lbs less feed per day than what it should given its weight, daily gain and composition of gain. Also, certain animals that are 6 STARS for Quality Grade will have a GPD[®] of +23.86. That means that this animal is 23.86% more likely to grade Choice or better than a 0 Star Animal.

GeneSTAR[®] Feed Efficiency - GeneSTAR[®] Feed Efficiency is based on Net Feed Intake (NFI). NFI is the difference between an animal's actual feed intake and the amount of feed an animal is expected to eat based on its size, composition and growth rate.

Calves that eat less than expected will have a negative NFI
Negative NFI = Superior Feed Efficiency

Calves that eat more than expected will have a positive NFI
Positive NFI = Inferior Feed Efficiency

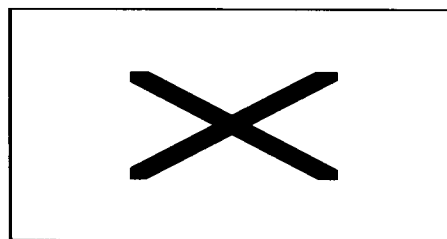
NFI has been proven to be a better trait than Feed Conversion for improving True Feed Efficiency. Feed Conversion is a ratio

of lbs of consumption versus lbs of gain. It is possible to improve this ratio by improving gain with no impact on True Feed Efficiency. This generally results in heavier carcass weights and heavier mature size, both of which are often a negative in terms of reducing the cost of producing beef. Whether yours is a cow calf operation where feed costs typically make up more than 65% of the total variable costs or a feedyard where a 20% improvement in feed conversion can affect profitability by more than \$60/hd; feed efficiency is a trait that directly affects the bottom line. GeneSTAR[®] Feed Efficiency consists of four markers which together identify as much as a 15% difference in daily feed consumption with no affect on other traits like Average Daily Gain, Carcass Weight, Quality Grade or Yield Grade

GeneSTAR[®] Tenderness - This was the first multi-gene single trait DNA test commercially available to the beef industry. It combines test results for several markers and genes for the same trait. The test is based, in part, on two genes involved in the post-mortem tenderization process: Calpastatin and Calpain. Calpain is an enzyme which weakens muscle fibers thereby making the fibers more tender. Calpastatin is an enzyme which inhibits the post-mortem tenderization process by inhibiting the effects of Calpain.

GeneSTAR[®] Quality Grade - This is a DNA genetic marker panel test offered by Bovigen which identifies the presence of multiple major genes associated with quality grade and marbling. These markers provide beef producers with a quicker and more accurate test to determine an animals potential for improved quality grade. GeneSTAR Quality Grade includes TG5 which was the first gene marker for a production trait in beef cattle. This panel of markers is the only marbling or quality grade test to have passed an independent validation by the National Beef Cattle Evaluation Consortium.

How do I use this in my breeding program? For each trait, focus on identifying those animals with GPDs[®] better than an acceptable threshold. Once you've done that, then use the individual STAR results to make individual mating decisions with the animals already in your herd. By focusing on animals that are 1 or 2 STARS for each marker, you improve the odds of creating offspring that are 2 STARS for each marker.



For More Information, Contact Bovigen at:

877 BEEF DNA or www.bovigen.com

SCHROEDER RANCH BULLS – *We measure it ~ You manage it!!*

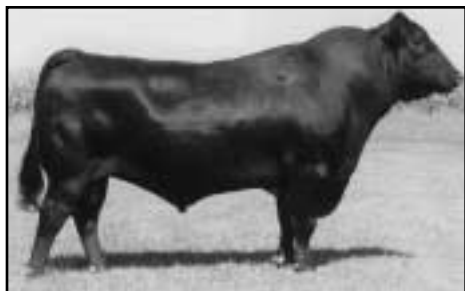
*Yes, Harriet, There Is A
FREE LUNCH in the cattle business
and it is called Heterosis/Hybrid
Vigor with CROSSBREEDING!!*

Use Schroeder Ranch genetics to maximize your profit by producing more pounds at weaning time – it really is “free” with your simple management decision to turn out Schroeder Ranch bulls!

Why else should we use Schroeder Ranch genetics?

- Performance tested for comparison.
- Fertility tested.
- Ultrasound measured – compare the REA of these bulls with other producers' bulls and you will realize that Schroeder bulls are phenomenal.
- Temperament – gentle animals make you more money – it is a proven fact.
- GeneSTAR DNA tested to enhance predictability and expand selection pressure.
- Unconditional first breeding season guarantee.

REFERENCE SIRES



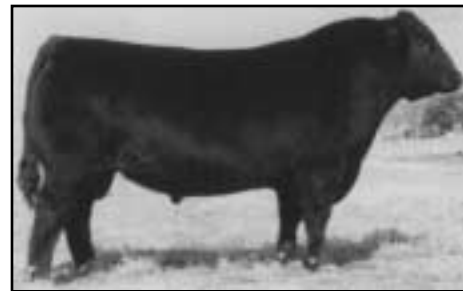
Bon View New Design 878

- Unbeatable Consistency
- Super daughters
- Multi-trait leader



SAF Connection

- Calving ease choice
- Calves have great dispositions
- Eye appealing progeny



G13 Structure

- Provides length growth and muscle
- Popular show bull sire



BUF CRK Romeo L081

- Red Angus
- Calving ease with growth
- Longevity and strong maternal



MLK CRK Capstone

- Red Angus
- Calving ease
- Adds volume/mass



Glacier Chateau

- Red Angus/consistency
- Productive daughters
- Strong maternal